

## **Historic, archived document**

Do not assume content reflects current scientific knowledge, policies, or practices.



INDEXED

LIBRARY

RECEIVED

☆ SEP 11 1936 ☆

U. S. Department of Agriculture



La Fiancee

Moonlight

Giant

# Marshall's

## MATCHLESS BULBS

FALL 1936

### Three Popular Tulips

(See pages 4 and 5 for full description).

	Per Doz.	Per 100
Darwin—La Fiancee .....	\$0.90	\$ 6.00
Cottage—Moonlight .....	.85	5.50
Darwin—Giant .....	1.00	6.50
	<hr/>	<hr/>
	\$2.75	\$18.00

#### SPECIAL OFFER

Free delivery.

12 each, 36 bulbs for .....	\$ 2.40
25 each, 75 bulbs for .....	4.50
50 each, 150 bulbs for .....	8.50
100 each, 300 bulbs for .....	16.00

**W. E. MARSHALL & CO., Inc.**  
150 WEST TWENTY-THIRD STREET  
NEW YORK CITY

**I**N the pages of this, our 34th annual bulb catalog, we hope that our many clients will find numerous items of interest in the wide variety of both tender and hardy bulbs listed therein.

Our bulbs are, in all cases, of the highest grade procurable. It is our constant aim to more fully merit the excellent reputation we enjoy as an establishment where one will find "everything good for every good garden."

**W. E. MARSHALL & CO., Inc.**

150 W. 23rd St., NEW YORK CITY

Telephone: CHelsea 3-3287—3-3288

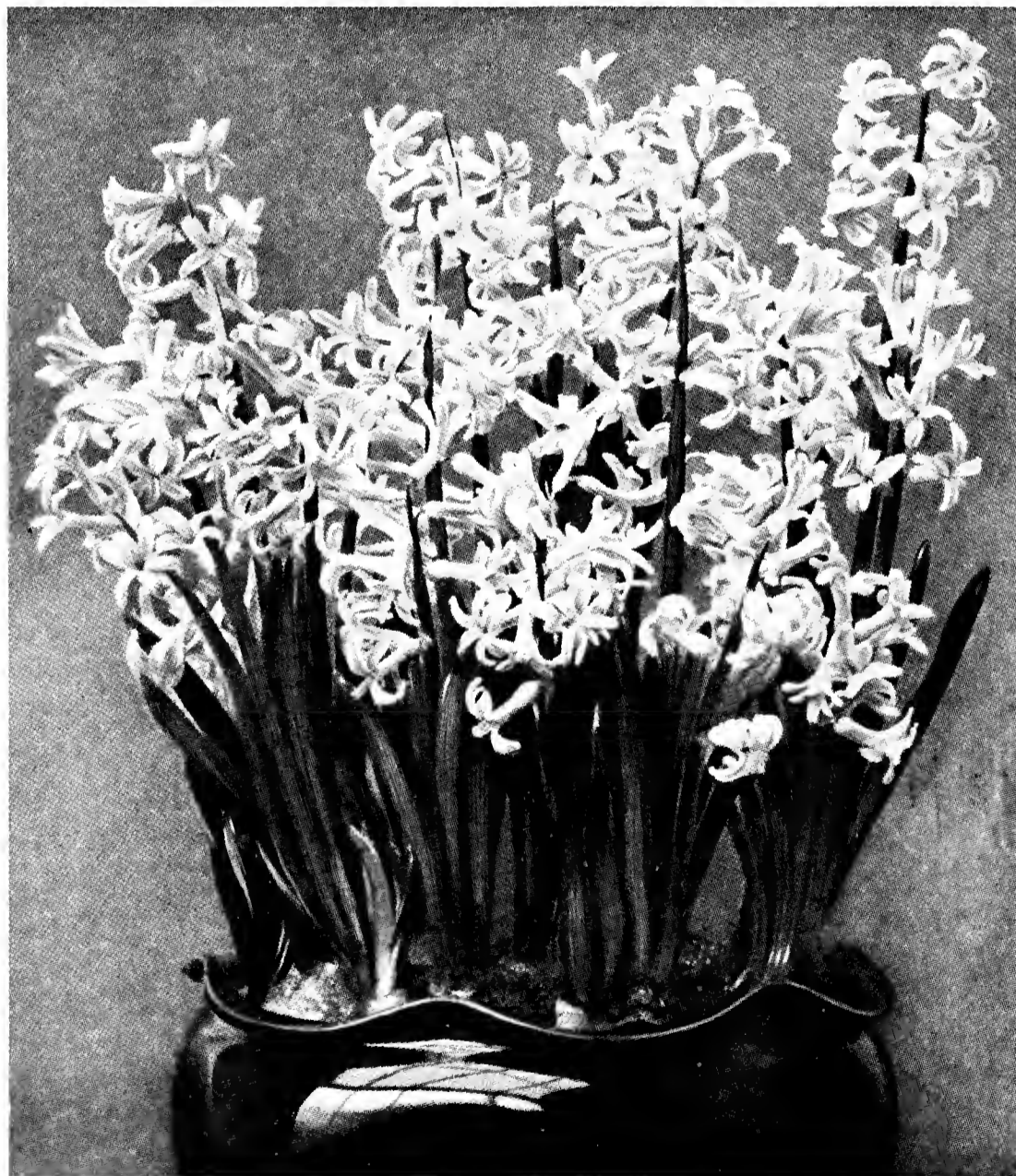
Cable Address: "LILIES" New York

**Important  
FLORAL  
DATES**

In 1937

Easter Sunday—  
March 28

Mothers' Day—  
May 9.



Hyacinth Multiflora

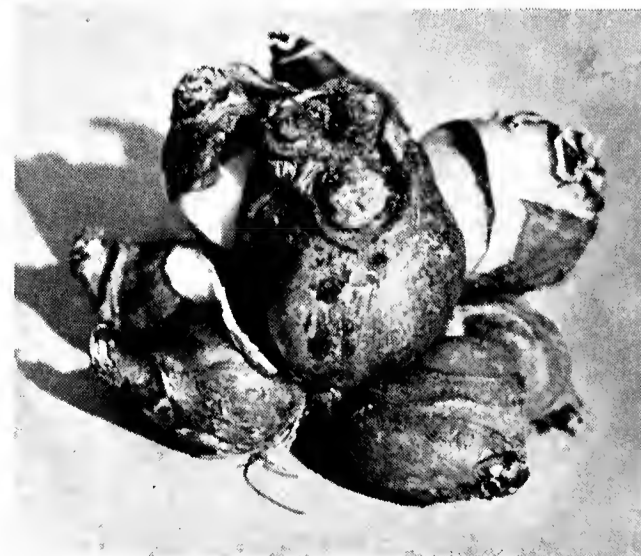
*New*  
*Hyacinth*  
**MULTIFLORA**

This new type of Hyacinth has been specially prepared to produce a bulb having several flowering crowns. Each bulb will bear from 8 to 12 loosely arranged and most attractive flower spikes similar to Roman Hyacinths. We are in a position to supply these in separate colors. Pure white, rose-pink, red, light clear blue and dark blue.

**Note**—Orders for above should be placed early to insure delivery.

Each one of these large bulbs is packed in a separate carton to prevent the clusters from being broken apart.

**3 for \$1.25**  
**\$4.50 per doz.**  
**\$30.00 per 100**



Hyacinth Multiflora. Showing Type of Bulb

**Marshall's Matchless Bulbs**

*A Standard of Quality for 34 Years*

# Marshall's Matchless HYACINTHS

The varieties enumerated below have been selected for their distinct coloring and free flowering qualities and are all selected top root bulbs, specially suited for growing in pots or glasses or for high grade bedding.

## EXHIBITION SIZE

### SINGLE RED, ROSE AND PINK

- Gertrude.** Bright, rosy red; large, compact spike; very popular.  
**Lady Derby.** Light rose-pink; early forcer.  
**La Victoire.** When forced, brilliant dark pink; grown outside, a brilliant red.  
**Marconi.** Bright rose-pink with bells of great substance.  
**Princess Margaret.** Immense, well formed truss, with bells of soft pink. An excellent forcer. 45c each; \$4.50 per doz.; \$30.00 per 100.  
**Queen of the Pinks.** Brilliant pink.

### SINGLE BLUE AND PURPLE

- Dr. Stresemann.** A lovely true blue, slightly lighter edge. A magnificent truss. 45c each; \$4.50 per doz.; \$30.00 per 100.  
**Electra.** Light silvery blue; enormous spike.  
**Grand Maitre.** Dark porcelain-blue; extra large.  
**King of the Blues.** Deep purplish blue; fine spike.  
**Myosotis.** Light clear blue. An excellent forcer.  
**Perle Brilliant.** Light blue, perfect shade.

### SINGLE WHITE

- La Grandesse.** Pure white, very large spikes and bells.  
**L'Innocence.** A pure white, handsome flower.

### SINGLE YELLOW

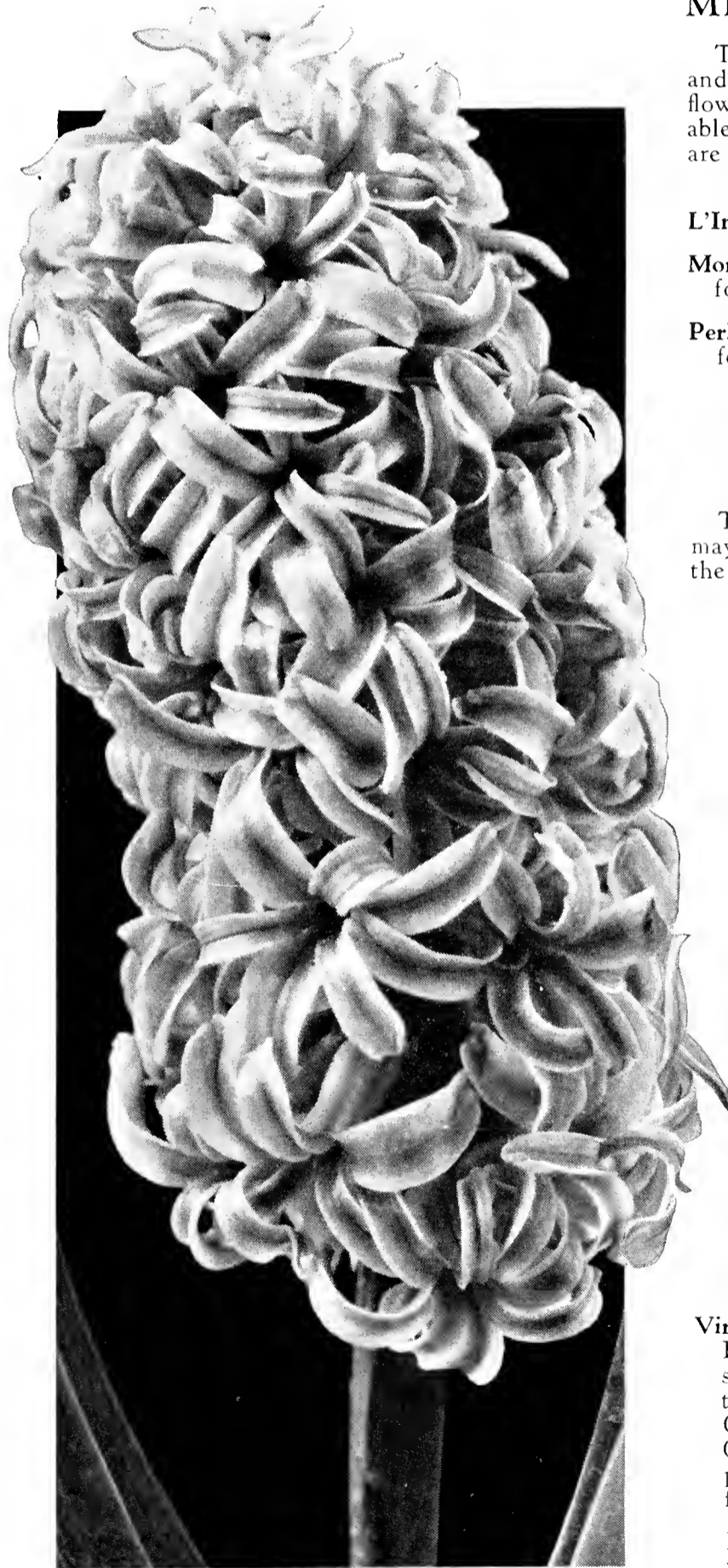
- City of Haarlem.** Golden yellow.  
**Yellow Hammer.** Golden yellow.  
 The above named Hyacinths: 25c each; \$2.50 per doz.; \$18.00 per 100.  
 Except where noted.

## SELECT FIRST SIZE NAMED HYACINTHS

These are smaller than our Exhibition Bulbs, but are fine flowering stock and admirably adapted for pot culture and high grade bedding where distinct shades of color are desired. We can furnish them in the following grand varieties:

- Gertrude.** Deep rose; extra fine for bedding.  
**King of the Blues.** Dark blue.  
**La Grandesse.** Pure white.  
**La Victoire.** When forced, a brilliant dark pink; outside a brilliant red.  
**Perle Brilliant.** Light blue.  
 Price, any of the above: 20c each; \$2.00 per doz.; \$14.00 per 100.

**NOTE:** If Hyacinths are wanted by Parcel Post, add 10c per doz. for 1st, 2nd and 3rd zones, 15c per doz. for 4th and 5th zones, 20c per doz. for 6th, 7th and 8th zones.



King of the Blues

## BEDDING AND FORCING HYACINTHS

These bulbs have been especially selected in Holland for us and are equally suited for either bedding or forcing. They will all throw large, uniform spikes of flowers, and cannot fail to give universal satisfaction.

### UNNAMED SELECTED SINGLE VARIETIES

- |                   |                   |
|-------------------|-------------------|
| Single Dark Pink  | Single Pure White |
| Single Dark Blue  | Single Scarlet    |
| Single Light Blue | Single Yellow     |

All of the above colors: Each, 15c; doz., \$1.60; 100, \$11.00.

## MINIATURE HYACINTHS

These are also known as Dutch Romans and Pan Hyacinths. They are small, single flowering Dutch Hyacinths, and are very suitable for growing in pans, pots or boxes. They are also fine for outdoor planting.

	Doz.	100
<b>L'Innocence.</b> Pure white	....\$1.20	\$ 8.00
<b>Moreno.</b> Deep pink. Early forcer	..... 1.20	8.00
<b>Perle Brilliant.</b> Light blue, perfect shade	..... 1.20	8.00

## PREPARED DUTCH HYACINTHS

These bulbs arrive early from Holland and may be had in flower for Christmas. Treat the same as White Roman Hyacinths.

	Doz.	100
<b>Bismarck.</b> Bright blue	..\$1.40	\$10.00
<b>L'Innocence.</b> A very fine pure white	..... 1.40	10.00
<b>Nimrod.</b> Deep rose, a fine forcer and earliest of all	..... 1.40	10.00
<b>Multiflora.</b> See opposite page.		

## Marshall's FRENCH ROMAN HYACINTHS

The flowers are delightfully fragrant, and each bulb will throw up three to four spikes. For forcing, three or four bulbs are generally planted in a pot. The Roman Hyacinths can be grown very successfully in bowls with fibre or pebbles for winter flowers.

	Doz.	100
<b>White Roman.</b> Mammoth bulbs	.....\$2.00	\$12.00

**Virginia.** The Blue Roman Hyacinth. It has longer stems and larger flowers than the white Roman Hyacinth. Can be easily flowered for Christmas. Each bulb will produce two or three perfect flower spikes.

First size bulbs	..... 2.50	18.00
Mammoth size bulbs	..... 3.50	25.00



## Marshall's Matchless

# DARWIN TULIPS

(MAY-FLOWERING)

THE Darwin Tulips, while among the last of the race to bloom, are easily first in the affections and esteem of flower lovers. Gorgeous in color, easy to grow, splendid as a cut flower, superb in mass plantings in shrubbery, they may be easily forced if brought into the conservatory or greenhouse not earlier than January.

The heights of the flowers are given in inches. Varieties marked with an asterisk (\*) are good for forcing.

Not less than 6 bulbs sold at dozen rates, 25 bulbs at 100 rate.

### Pink and Rose Shades

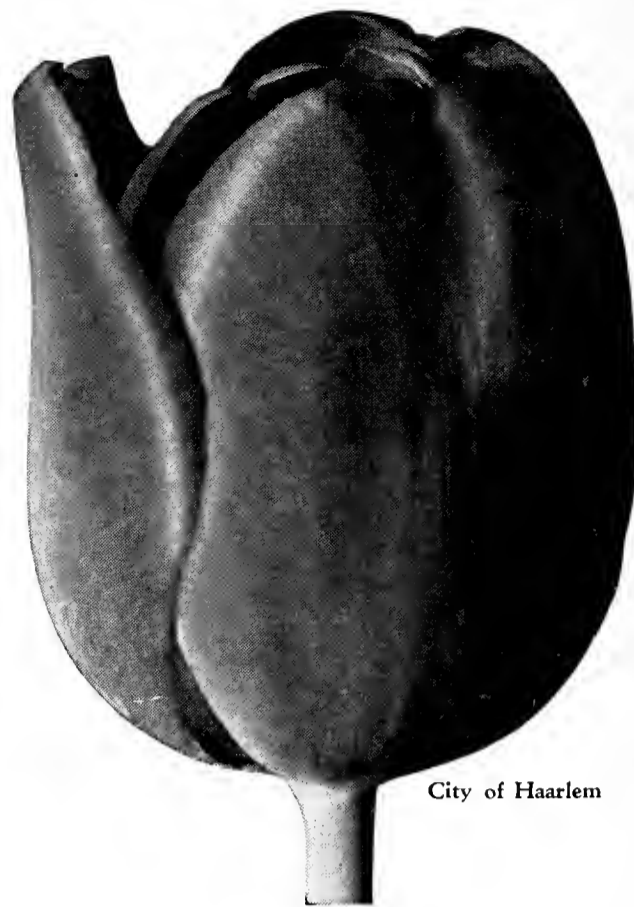
	Doz.	100
<b>Afterglow.</b> A rich, deep salmon-orange, salmon border. A striking variety. 26 in. ....	\$0.80	\$ 5.00
<b>Aviator Hawks.</b> Dark pink with pale margin, large flower on strong stem. 29 in. ....	1.40	9.00
<b>Baronne de la Tonnaye.</b> Intense carmine-pink with light rose margin; white base. 26 in. ....	.90	6.00
<b>Clara Butt.</b> Pastel salmon-pink flushed deeper. One of the most deservedly popular. 21 in. ....	.80	5.00
<b>Edmee.</b> Deep cherry-rose, silvery pink edges. A large flower. 28 in. ....	.85	5.50
* <b>La Fiancee.</b> Brilliant deep rose shading lighter at edges. Fine for borders or forcing. 25 in. ....	.90	6.00
* <b>La France.</b> Soft rose-pink of great beauty. Large and strong flower. 30 in. ....	1.50	10.00
<b>Mme. Krelage.</b> Soft rose-pink toning down to pale silvery rose at edges; large flowers. 24 in. ....	.80	5.00
* <b>Princess Elizabeth</b> (Julie Vinot). Soft Cattleya or orchid-pink with white base. 23 in. ....	.80	5.00
<b>Professor Rauwenhof.</b> Massive blooms of deep cherry-red, shaded salmon inside with lighter center. 28 in. ....	.85	5.50
* <b>Roi d'Islande.</b> A remarkably rich and unusual shade of old rose. Splendid forcer. 26 in. ....	.85	5.50
<b>Venus.</b> Pure silvery rose, white center with pale blue ring. A large flower with stiff stems. 29 in. ....	.90	6.00
* <b>William Copland.</b> Beautiful lilac-rose. A Tulip which always wins admiration. 25 in. ....	.80	5.00

### Purple, Black and Dark Shades

<b>Eclipse.</b> Warm crimson-maroon with blue base. Most attractive large flowers on stiff stems. 29 in. ....	1.90	14.00
<b>Faust.</b> Brilliant, rich, satiny purple, blue base. A large flower. 30 in. ....	.90	6.00
<b>Jubilee.</b> Splendid flower of great size. Blue-purple with white base. 25 in. ....	1.10	7.50
<b>La Tulipe Noire</b> (The Black Tulip). A massive flower of very deep maroon-black. Velvety sheen. 25 in. ....	.90	6.00
<b>Zulu.</b> An outstanding Tulip of velvety purple-black; egg-shaped blooms. 26 in. ....	.85	5.50

### Lilac, Lavender, Heliotrope and Blue Shades

<b>Bleu Aimable.</b> Rich bluish heliotrope, inside shaded darker violet-purple. 23 in. ....	.80	5.00
<b>Dream.</b> Large, perfect flowers of rosy lilac, with claret-purple interior. 27 in. ....	.80	5.00
<b>Duchess of Hohenberg.</b> Gray-lilac and rosy heliotrope. A delightful flower. 29 in. ....	1.80	12.00
<b>Euterpe.</b> Beautiful silvery lilac, edged light lilac. 28 in. ....	1.20	8.00
* <b>Giant.</b> Enormous flowers of deep, luminous violet-purple with light blue base. A superb flower. 30 in. ....	1.00	6.50
* <b>La Tristesse.</b> Deep, slaty purple toning to white at edges of petals. Fine forcer. 27 in. ....	.95	6.50
<b>Melicette.</b> Exquisite pure lavender, shading paler at edges; blue base. A particularly good color. 24 in. ....	1.10	7.50
* <b>Rev. H. Ewbank.</b> An unusually fine shade of soft lavender-violet with silver-gray shading. Splendid forcer. 23 in. ....	.80	5.00
<b>The Bishop.</b> Pure violet. Good stem. 26 in. ....	1.20	8.00



City of Haarlem

### Red and Crimson Shades

	Doz.	100
* <b>Bartigon.</b> Vivid fiery crimson with contrasting white base. Very popular. 24 in. ....	\$0.80	\$5.00
* <b>City of Haarlem.</b> Intense dark scarlet with darker bloom. One of the best red Darwins. Immense flowers. 24 in. ....	1.00	7.00
<b>Farncombe Sanders.</b> Fiery rosy scarlet with white center marked blue. 25 in. ....	.80	5.00
<b>King George V.</b> A superb glowing salmon-scarlet overlaid and suffused bright rose. 26 in. ....	1.20	8.00
<b>Pride of Haarlem.</b> Immense well formed blooms of brilliant rosy carmine with bright blue base. 25 in. ....	.80	5.00
<b>Prince of the Netherlands.</b> Large, deep cerise-scarlet, shaded salmon-rose. 30 in. ....	1.00	6.50
<b>William Pitt.</b> Large flowers of dark crimson with purplish bloom. 22 in. ....	.85	5.50

### White and Yellow Shades

* <b>White Queen</b> (La Candeur). A splendid variety opening pale rose but quickly turning to white. 24 in. ....	.85	5.50
<b>Yellow Giant.</b> A golden yellow of great beauty. Large flowers with black anthers. Strong stem. 30 in. ....	1.20	8.00
* <b>Zwanenburg.</b> A pure white Darwin with black anthers. Large and strong flower. 28 in. ....	1.00	7.00

### DARWIN TULIPS in MIXTURE

Mixed Darwin Tulips are unsurpassed for group planting, massing and for naturalizing. When so planted they form brilliant patches of color silhouetted against the rich verdure of the early summer season. The shades of colors included in our mixtures are judiciously blended so as to create delightfully artistic ensembles.

	Doz.	100	1000
<b>Marshall's Matchless Mixed Darwins.</b>			
From named varieties .....	\$0.90	\$6.00	\$55.00
<b>Splendid Mixed Darwins.</b> A fine assortment of colors .....	.80	5.00	45.00

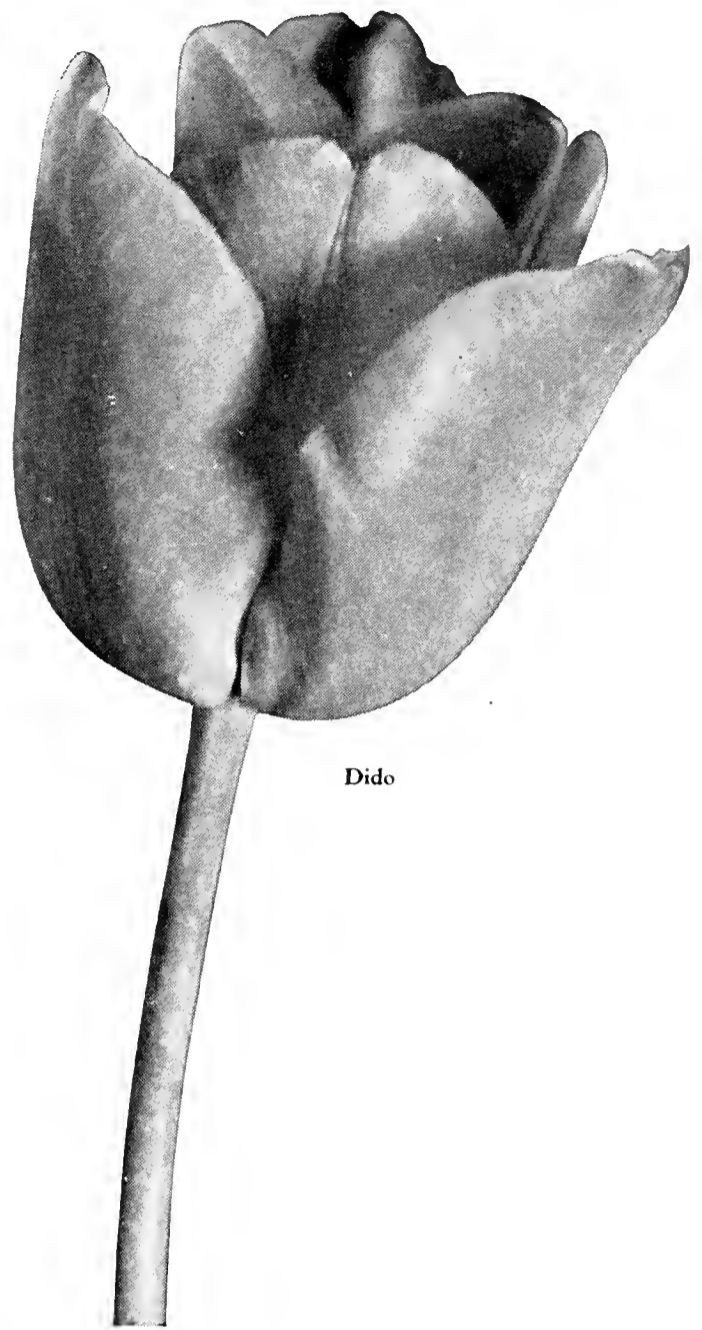
# COTTAGE GARDEN and BREEDER TULIPS

(MAY-FLOWERING)

These late flowering Tulips are used extensively for late bedding and certainly contribute heavily to the gala spring display. As a cut flower they are ideal, the wide range and brilliancy of their colors being most effective.

Varieties marked with an asterisk (\*) are good for forcing.

	Doz.	100		Doz.	100
<b>Alaska.</b> (Lily-flowered). Golden yellow. Reflexed outer segments. 24 in. . . . .	\$0.85	\$5.50	<b>Moonlight.</b> Long oval flowers of bright canary-yellow. Slightly reflexed. 22 in. . . . .	\$0.85	\$5.50
<b>Ambrosia.</b> Orange, flushed lilac-rose. 24 in. . . . .	.95	6.50	<b>Mrs. Moon.</b> Large, golden yellow flowers of good substance. 24 in. . . . .	.90	6.00
<b>Arethusa.</b> Canary-yellow. Large, well formed flowers on tall stem. Highly recommended. 27 in. . . . .	1.00	7.00	<b>Picotee</b> (Maiden's Blush). Handsome, pure white flowers, recurved petals and with rose-pink margins. 20 in. . . . .	.85	5.50
<b>Avis Kennicott.</b> Deep yellow, black base. 24 in. . . . .	.90	6.00	<b>*Rosabella.</b> Beautiful carmine-rose with broad white edge; inside shell-pink. 25 in. . . . .	1.20	8.00
<b>*Carrara.</b> Pure white; large cup-shaped blooms with rounded segments. 25 in. . . . .	1.30	8.50	<b>Sirene.</b> A charming Lily-flowered cerise-pink, shading to pale pink at the margins; white base. 26 in. . . . .	.90	6.00
<b>Dido.</b> Outside orange-red shaded carmine; inside salmon-orange; yellow base bordered green. 30 in. . . . .	.85	5.50	<b>White Duchess.</b> A pure white lily-flowered type of exquisite beauty. Petals are undulated. 27 in. . . . .	2.30	16.00
<b>Inglescombe Yellow.</b> Glossy canary-yellow. Globular flower on sturdy stem. 24 in. . . . .	.80	5.00			
<b>John Ruskin.</b> Beautiful combination of apricot, rose, mauve and yellow. Exquisite. 18 in. . . . .	.80	5.00			



Dido

### MIXED COTTAGE TULIPS.

This mixture is made by ourselves from the named varieties. 80c per doz.; \$5.00 per 100.



Breeder Tulip, Copernicus

## Marshall's DUTCH BREEDER TULIPS

Breeder Tulips bloom at the same time as the Darwins and their immense blooms are erectly held on long, strong stems. The colors of the Breeder are what modernists term as "art" or pastel shades, embracing rich tones of bronze, yellow and purple. For association with the brighter hued Darwins, they are unsurpassed.

	Doz.	100
<b>Bacchus.</b> A superb flower of rich violet-blue, darker exterior. White base. 28 in. . . . .	\$0.90	\$6.00
<b>Bronze Queen.</b> Golden yellow, tinted apricot and bronze. An exquisite color. 28 in. . . . .	.85	5.50
<b>Copernicus.</b> Dark coppery bronze, flushed old rose, with olive base. 29 in. . . . .	.95	6.50
<b>*Dom Pedro.</b> Distinct shade of coffee brown, shaded maroon. Interior rich mahogany. 22 in. . . . .	.95	6.50
<b>Indian Chief.</b> Immense flowers of bright reddish purple, flushed coppery brown. 32 in. . . . .	1.50	10.00
<b>Lucifer.</b> Terra-cotta-orange . . . . .	1.00	7.00
<b>Louis XIV.</b> A Tulip of outstanding merit with blooms of dark purple flushed bronze and edged golden brown. A superb flower. 28 in. . . . .	.95	6.50
<b>Prince Albert.</b> Glowing mahogany-brown, shaded dull bronze. Green base. 30 in. . . . .	.90	6.00
<b>Velvet King</b> (Dreadnaught). Shining velvety-purple. Very beautiful . . . . .	1.00	7.00
<b>Marshall's Matchless Mixed Breeders.</b> Here we offer an unusually choice assortment of colors, judiciously blended so as to insure the grower a wider assortment of splendid color . . . . .	.90	6.00

# BOTANICAL TULIPS (*Tulipa Species*)

Here we offer a galaxy of exquisite floral treasures to those fastidious gardeners who desire something choice and unusual. They are just the treasures to stimulate the keen enjoyment of gardening, so often surfeited with the commoner—but beautiful—bulbs offered and so universally grown.

It is well nigh impossible to attempt to visualize or portray in words the beauty afforded by these gems. Tucked away, in generous quantities in the rock garden or border, they will be seen to advantage but are perhaps at their best in colonies on sloping hill or bedecking the borders of brook or waterside.

They are easy to grow, hardy and give abundantly of their vivid blossoms under ordinary care. They increase in magnificence and number with each passing year. They are moderately priced so as to enable flower lovers to grow them in generous quantities.



Tulipa Kaufmanniana



Tulipa Acuminata

**Acuminata** (Cornuta Stenophylla). A native of Turkey. Has very narrow petals, tapering at the top to a threadlike point. The color is yellow, streaked red. Height 18 in. . . . . \$2.00 \$15.00

**Clusiana** (The Lady Tulip). This species comes from the Mediterranean region; has small white flowers with a flush of rose on the outer surface, and purplish black at the base. Height 12 in. . . . . 1.00 7.00

**Eichleri**. A native of Turkistan. It is a fine species with large leaves and broad flowers of intense scarlet, having a black blotch at the base margined with yellow. Height 8 in. . . . . 1.00 7.00

**Greigi**. Low growing, the flower stem rarely exceeding 8 inches in height, the leaves marbled with purplish blotches. The large

sized flowers are of a dazzling vermilion-red color, faintly marked at the base with a dark spot. Early flowering and most attractive . . . . . \$7.00 \$50.00

**Kaufmanniana**. An early flowering species from Turkestan and is one of the finest. It grows 8 inches high with broad, flat leaves. The flowers are very large, the color being white to creamy yellow tinged with pink on the outside, the petals marked with a broad orange blotch . . . . . 1.80 12.00

**Sylvestris** (Florentina odorata). A British species. Pale yellow flowers with casual edgings of red and frequently the scapes carry two flowers, but the most valuable property of all is its fragrance. April and May flowering. Height 10 in. . . . . 1.00 7.00

## Marshall's SINGLE EARLY TULIPS (APRIL-FLOWERING)

Tulips for bedding are the most popular and effective of all hardy, bulbous plants. In our descriptions we give the color and average height to which they grow. For pot culture and forcing for winter cut flowers they are invaluable.

For outdoor planting, 4 inches to the bottom of the bulb is deep enough, and a distance of 5 to 6 inches between the bulbs is sufficient. They may be planted in October and November, before the ground freezes. For pot culture, a compost of 2 parts loam to 1 part light manure, with sand intermixed, is suitable. From 3 to 5 bulbs, according to size, in a 5-inch pot are very effective. The pot should be buried until the bulbs are well rooted.

A, B, and C indicate season for flowering. A and B may be planted to flower about the same time in the open ground; C flowers later. The figures indicate average height in inches.

Not less than 6 bulbs sold at dozen rate, 25 at 100 rate.

	Doz.	100
<b>Brilliant Star.</b> Vermilion-scarlet. Fine for early forcing. A, 12 . . . . .	\$0.80	\$5.00
<b>Cottage Maid.</b> Bright pink; fine forcer or bedder. B, 10. . . . .	.80	5.00
<b>De Wet.</b> Beautiful golden flushed and striped fiery orange-scarlet. B, 15 . . . . .	.90	6.00
<b>Duchesse de Parma.</b> Orange-red, margined with yellow. B, 14 . . . . .	.80	5.00
<b>Fred Moore.</b> Dark orange; long stems; early forcer. A, 14. . . . .	.80	5.00
<b>Hobbema.</b> A unique color, best described as "crushed strawberry." Tall stem; splendid forcer. 15 in. . . . .	.85	5.50
<b>Keizerskroon.</b> Crimson-scarlet, bordered with clear yellow. B, 14 . . . . .	1.00	7.00
<b>Mon Tresor.</b> Rich, deep yellow. Large flowers. Excellent for early forcing. 13 in. . . . .	.90	6.00

	Doz.	100
<b>Pink Beauty.</b> Rosy pink, slightly shaded white. Fine bedder. B, 13 . . . . .	\$0.90	\$6.00
<b>Prince of Austria.</b> Brilliant orange-red. Good forcer. B, 14. . . . .	.80	5.00
<b>Proserpine.</b> Salmon-rose-pink, fine form; good forcer. B, 13. . . . .	.80	5.00
<b>Rising Sun.</b> Golden yellow, of enormous size. Tall stem; excellent forcer. B, 14 . . . . .	.90	6.00
<b>Rose la Reine.</b> Deep rose; the best early forcer. B, 11 . . . . .	.80	5.00
<b>White Beauty.</b> The white sport of Pink Beauty; large, pure white flower . . . . .	1.20	8.00

**SINGLE EARLY TULIPS IN MIXTURE**  
**Marshall's Superfine Mixture.** Brightest colors; many varieties . . . . . \$0.75 \$4.50 \$42.00  
**Marshall's Matchless Mixed.** From named varieties . . . . . .90 6.00 55.00

## DOUBLE TULIPS (APRIL FLOWERING)

Double Tulips usually flower about 10 days later than the Single Early Tulips. They are very popular for bedding and forcing.

	Doz.	100
<b>Boule de Neige.</b> Pure white large, full flower, resembling a white Peony. 13 in. . . . .	\$1.00	\$ 7.00
<b>Couronne d'Or.</b> Beautiful orange-yellow, large, handsome flower. 10 in. . . . .	.90	6.00
<b>Mr. Van der Hoef</b> (Pure Yellow Murillo). Large, double yellow; good forcer. 12 in. . . . .	.85	5.50
<b>Imperator Rubrorum.</b> Glowing scarlet. Large flower. Suitable for forcing. 12 in. . . . .	.90	6.00
<b>Murillo.</b> Blush white, shaded with rose; large. 12 in. . . . .	.80	5.00
<b>Peach Blossom.</b> A beautiful light pink; fine for forcing. 12 in. . . . .	.85	5.50
<b>Tea Rose.</b> Soft saffron-yellow. 12 in. . . . .	.80	5.00

### MIXED DOUBLE TULIPS

**Marshall's Matchless Mixed.** A first-class mixture of all colors. . . . . \$0.80 \$5.00 \$48.00

## PARROT TULIPS

The petals of these have feathered edges, and in addition to other colors, combine shades of green—a peculiarity confined to this class. These Tulips are very showy and worthy of general planting in beds and borders. Very late in flowering.

	Doz.	100
<b>Admiral of Constantinople.</b> Glossy scarlet, shaded and tipped orange . . . . .	\$0.80	\$ 5.00
<b>Fantasy.</b> Beautiful salmon-rose with ragged edges and fantastically shaped petals, erect strong stems . . . . .	1.40	9.00
<b>Feu Brilliant</b> (Cramoisi Brilliant). Dazzling crimson . . . . .	.80	5.00
<b>Lutea Major.</b> Yellow, striped crimson and green . . . . .	.80	5.00
<b>Markgraaf.</b> Golden inside, feathered brilliant scarlet, purple and green outside. . . . .	.80	5.00
<b>Marshall's Finest Mixed.</b> A combination of all the above sorts . . . . .	.80	5.00



# Marshall's NARCISSI

## and Daffodils

Van Waveren's  
Giant



Daffodils are an indispensable factor in the pageant of spring floral beauty, and whether grown as specimens in the garden borders or planted "au naturel" in woodland or glade, each blossom seems a concentrated gleam of golden sunshine. Absolutely hardy, they increase in beauty and size, year after year. Our list has been carefully compiled and contains all that is best in these splendid bulbs.

The **Incomparabilis** varieties are crosses between yellow Trumpets and Poeticus, with larger crowns than the Barri types.

The **Barri** types have crowns usually not over one-third the length of the perianth petals.

The **Leedsi** varieties always have white perianth petals and the crowns are mostly white or light yellow.

The **Poetaz** kinds have a bunch of flowers on each stem and are very fragrant.

(The prices quoted below are for the very largest bulbs).

### Large Trumpets

	Doz.	100
<b>Cleopatra.</b> A splendid flower with lemon-yellow perianth and with overlapping petals. Light yellow trumpet .....	\$2.25	\$16.00
<b>Emperor.</b> Perianth primrose-yellow, trumpet golden yellow .....	1.40	8.50
<b>Empress.</b> Bicolor. White perianth contrasts golden yellow trumpet .....	1.40	8.50
	Doz.	100
<b>Golden Spur.</b> Fine flower of rich golden yellow .....	\$1.20	\$ 7.50
<b>King Alfred.</b> Golden yellow throughout. An immense flower with good substance .....	1.90	13.00
<b>Mrs. E. H. Krelage</b> (The White King Alfred). Creamy white flowers of the same character as King Alfred .....	3.00	20.00
<b>Olympia.</b> A much improved and enlarged Emperor. Free flowering .....	1.90	13.00
<b>Sir Francis Drake.</b> Large clear yellow flower on long stems. Very early .....	1.90	13.00
<b>Spring Glory.</b> White perianth and yellow trumpet. Large flowers of great substance .....	1.40	9.00
<b>Tresserve.</b> Large yellow trumpet with pale yellow perianth .....	1.50	10.00
<b>Van Waveren's Giant.</b> Exceptionally large flowers. Bright yellow trumpet, primrose perianth. The giant of the race .....	2.40	16.00
<b>Victoria.</b> Creamy white perianth and large golden yellow trumpet .....	1.40	9.00

**Glory of Sassenheim.** A superb flower with sulphur perianth and golden yellow trumpet ..... \$1.40 \$ 9.00

**G. H. Van Waveren.** All yellow with gleaming gold dust in the texture .... 4.00 28.00

### Incomparabilis

	Doz.	100
<b>Autocrat.</b> Perianth and cup deep sunny yellow. Pointed petals .....	\$1.40	\$ 9.00
<b>Croesus.</b> A pale yellow disk of pure gold proudly supports the deep red crown .....	2.20	15.00
<b>Lucifer.</b> Large sulphur-white perianth, yellow cup with orange-red edge .....	1.30	8.00
<b>The Star.</b> White wavy perianth, unusually long red cup. Very late .....	1.30	8.00
<b>Sir Watkin.</b> Primrose perianth and golden cup tinged with bright orange .....	1.30	8.00
<b>Will Scarlet.</b> Creamy colored perianth, frilled cup of wonderful orange-scarlet .....	1.50	10.00

### Barri

	Doz.	100
<b>Bath's Flame.</b> Yellow perianth, deep yellow cup, broad edge of orange-red ...	\$2.00	\$14.00
<b>Conspicuous.</b> Broad spreading sulphur perianth. Yellow cup edged scarlet .....	1.00	6.00
<b>Diana Kasner.</b> Pure white perianth with a large fluted, yellow cup with a blood-red frill .....	2.00	15.00
<b>Early Surprise.</b> Bright yellow base, scarlet rimmed cup resting on snow-white petalage .....	1.50	10.00
<b>Firetail.</b> Creamy white perianth. Brilliant scarlet-crimson crown. 18 inches tall..	3.00	20.00
<b>Lady Moore.</b> Snow-white perianth, yellow cup with deep orange edge .....	1.80	12.00
<b>Red Chief.</b> White, bold flat cup with broad band of bright crimson-scarlet ..	2.00	14.00
<b>Seagull.</b> Broad petaled, pure white perianth, slightly reflexed. Light yellow cup with a red picotee edge .....	1.30	8.00

### Leedsi

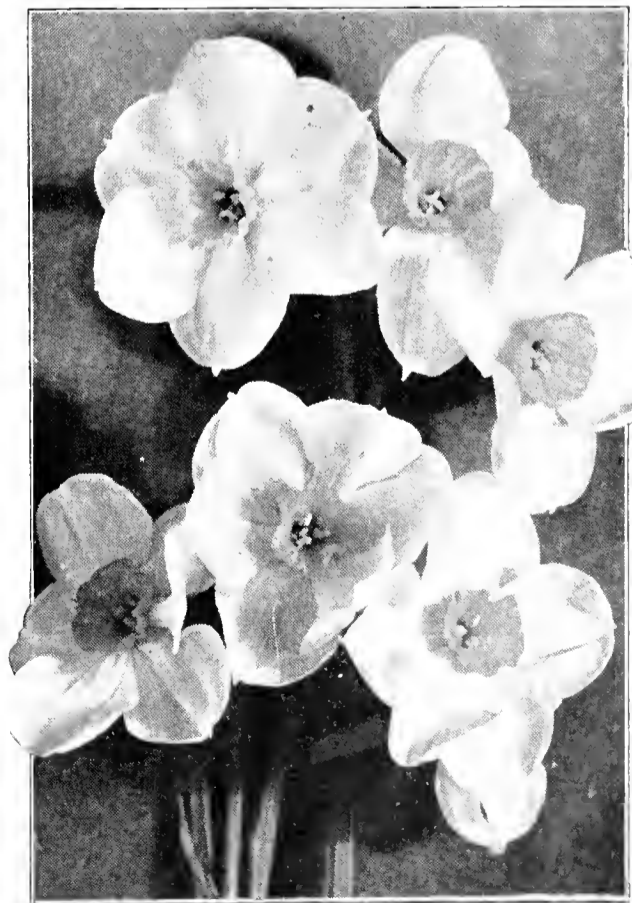
	Doz.	100
<b>Evangeline.</b> A tall Daffodil with reflexed, star-shaped, white perianth. Lemon-yellow cup. ....	\$1.10	\$ 7.00
<b>Mrs. Langtry.</b> Broad sulphur-white perianth with pale primrose cup .....	1.00	6.00
<b>Queen of the North.</b> Broad overlapping white segments. Pale primrose cup, crinkled edge .....	1.10	7.00
<b>White Lady.</b> A superb variety with pure white perianth and pale yellow cup .....	1.00	6.00

### Poetaz

<b>Aspasia.</b> Superior to Elvira as perianth is purer white and larger, with more florets ..	\$1.20	\$ 7.00
<b>Cheerfulness.</b> Double white hybrid with 3 to 4 flowers on stem, white shading to pale yellow at base .....	2.00	14.00
<b>Helios.</b> Creamy yellow perianth with slightly deeper yellow cup .....	1.40	9.00
<b>Laurens Koster.</b> Pure white with orange cup. Nine or more flowers on a stem ..	1.20	7.00
<b>Orange Cup.</b> Creamy white. Conspicuous orange cups. 6 to 8 florets on stem .....	1.30	7.50

### Poeticus

	Doz.	100
<b>Glory of Lisse.</b> Excellent forcer. Earlier than Ornatus .....	\$1.00	\$ 6.00
<b>Horace.</b> Pure white perianth, conspicuous red eye. Strong stem. Splendid forcer..	1.20	7.00
<b>Ornatus.</b> Large pure white flowers, saffron cup, tinged rose-scarlet .....	1.00	6.00
<b>Poeticus</b> (Pheasant's Eye). Later flowering than Ornatus. White with orange cup .....	.80	5.50



Poetaz, Laurens Koster

Not less than 6 bulbs sold at dozen rate, 25 bulbs at 100 rate.

# NARCISSI *and* DAFFODILS



Triandrus Albus

## Double Narcissus or Daffodils

Double Narcissus are particularly adapted and suitable for planting in borders or for naturalizing. They form a very distinct feature in the spring flowering border. When once established, they increase from year to year in size and beauty.

	Doz.	100
<b>Albus plenus odoratus.</b> Snow-white Gardenia-flowered Daffodil .....	\$1.20	\$7.50
<b>Primrose Phoenix.</b> Primrose-yellow, large, rose-shaped flower, long stem .....	1.30	8.00
<b>Twink.</b> An attractive new variety with alternating petals of primrose and clear orange. Each whorl of petals symmetrically centered over the other. Selected double-nosed bulbs .....	3.20	22.00
<b>Von Sion.</b> The old-fashioned, double Daffodil. Flowers deep golden yellow which are seen to best advantage in permanent borders or in shrubbery..	1.40	9.00

## Rock Garden Narcissus

	Doz.	100
<b>Bulbocodium conspicuus.</b> Popularly known as the "Hoop Petticoat" Daffodil. Golden yellow, 6 in. high .....	\$1.80	\$12.00
<b>Cyclamineus major.</b> A charming little Portuguese Daffodil, producing lemon-yellow, cyclamen-like flowers on wiry stems. 6 inches high .....	4.00	28.00
<b>Juncifolius.</b> A miniature rush-leaved Daffodil .....	3.50	25.00
<b>Minimus.</b> The smallest and dwarfest of all Daffodils. Very early, dainty, trumpet-shaped flowers.	3.50	25.00
<b>Triandrus albus.</b> Known as the Angel's Tears Daffodil. The drooping flowers are pure white and appear in clusters of 3 to 7 on a wiry stem .....	2.10	15.00
<b>W. P. Milner.</b> A dainty, free flowering variety with miniature white trumpet .....	2.50	18.00

## Precooled Narcissus for Christmas Flowering

These bulbs have been undergoing a cooling treatment and should be potted up immediately on receipt and placed in a cool cellar for proper root action which is completed much more quickly than untreated bulbs. They should never be placed in heat until the bud appears in the crown.

(Orders should be placed before June 25th to allow time for precooling).

	25	100
<b>Large Trumpet, King Alfred</b> .....	\$4.00	\$15.00
<b>Poetaz, Laurens Koster</b> .....	2.50	9.00
<b>Poeticus, Glory of Lisse</b> .....	2.30	8.00
<b>Large Trumpet, Spring Glory</b> ...	3.50	12.00

(All the above are largest double nose bulbs).

## Polyanthus Narcissus

The Polyanthus varieties all are suited for growing in pots with pebbles or fibre. They are very free flowering, bearing 6 to 9 flowers on a stem. They are not hardy enough to be planted out-of-doors in the northern states.

	Doz.	100	1000
<b>Grand Soleil d'Or.</b> Yellow with orange cup, very free flowering ...	\$2.00	\$13.00	\$120.00
<b>Paper-White Grandiflora.</b> The best Narcissus for growing in water. The flowers are large, attractive in color, and intensely fragrant. Planted in bowls of pebbles and water they will bloom in from 3 to 6 weeks, depending on the season planted. Only the largest bulbs procurable should be used. Small bulbs are not recommended.			
<b>Mammoth Bulbs.</b> 4 for 30c .....	.80	5.00	45.00

Not less than 1/2 dozen sold at dozen rates.

## Jonquils

A class related to the Narcissus and suitable for pot culture or planting out. The culture required is the same as for Hyacinths.

	Doz.	100
<b>Campernelle.</b> Bright yellow; very fragrant; best for outside .....	\$1.20	\$7.00
<b>Double Campernelle rugulosus.</b> Sweet scented. Rich yellow, fine .....	1.20	7.00

**NOTE:** If Narcissi are wanted by parcel post, add 15c per doz. for 1st, 2nd and 3rd zones; 20c per doz. for 4th and 5th zones; 25c per doz. for 6th, 7th and 8th zones.



Paper-White Grandiflora



Campernelle



# DAFFODILS *for Naturalizing*



**T**HERE is no more enchanting picture in spring than a natural planting of Daffodils, so arranged in groups that the individuality of each species may be maintained. An irregular massing should be made where the grouping is dense in the center with a thinning out towards the edges like a summer cloud.

We have made most satisfactory arrangements with an extensive grower of Narcissus in the northwestern area of the State of Washington, a section renowned for growing sturdy Daffodils, to supply us with a quantity of bulbs of certain varieties that are most adaptable for naturalizing purposes.

Practically any soil has been found suitable but when planted under trees and in woodlands, the leaves of the trees should not be removed, as taking away this natural food will not only injure your trees but also will prevent the Daffodils from producing as they should.

Plant 8 inches deep but avoid places where water may collect as they like drainage.

Plant them before October 15th or shortly thereafter. Place your order early as the demand is increasing for these bulbs at this special low price.

These bulbs are of large size and many of them double nosed. They may also be used in the garden border so that the following offer presents a good opportunity to Daffodil lovers to procure a fine collection at an extremely low cost.

## **A Special Offering of Narcissus for Naturalizing**

10 each, 10 varieties, 100 bulbs for .....	\$ 6.50
25 each, 10 varieties, 250 bulbs for .....	15.00
50 each, 10 varieties, 500 bulbs for .....	27.50
100 each, 10 varieties, 1000 bulbs for .....	50.00
500 each, 10 varieties, 5000 bulbs for .....	225.00

(All cash orders on above offer delivered free in United States)

## ALLIUM

These Alliums are all very beautiful and perfectly hardy. The three listed are most desirable for rock gardens, growing 8 to 10 inches high.

	Doz.	100
<b>Falcifolium.</b> Fine rosy purple .....	\$0.80	\$5.00
<b>Sp. Eastern Lake.</b> Fine clear pink .....	.80	5.00
<b>Unifolium.</b> Deep pink .....	.80	5.00

## AMARYLLIS

They should be grown in rich, sandy loam, with good drainage, and require abundant moisture when growing; but at their season of rest, water should be given sparingly.

### NEW HYBRIDS, HIPPEASTRUM

We are in a position to offer, for the first time, an exceptionally fine strain bearing enormous flowers, in separate colors, as follows:

	Each	Doz.
<b>Solid Red, Red with White Star, White and Red, White with Pink, White.</b>		
Separate colors .....	\$1.00	\$10.00
All colors mixed .....	.60	6.00
<b>Formosissima</b> (Jacobean Lily). Brilliant scarlet flowers of a very odd shape and formation..	.35	3.50
<b>Johnsoni</b> (St. Joseph Lily). Crimson-scarlet with broad white stripe down the center of each petal .....	.50	5.00
<b>Halli.</b> (See <i>Lycoris squamigera</i> ).		

## AMORPHOPHALLUS RIVIERI (African Lily)

The immense, dark red, calla-shaped flower precedes the leaves on this interesting plant. The stem is mottled green and white. The foliage, which opens later, stands on a stalk resembling an umbrella and forms a very ornamental plant. We can supply mammoth bulbs which can produce bloom in the house during the winter. \$2.50 each; 3 for \$7.00.

## ANEMONE CORONARIA

	Doz.	100
<b>Marshall's Selected Double Mixed.</b> A specially selected strain for greenhouse forcing. The flowers are double and semi-double, measuring 2½ to 3 inches in diameter. The colors are all distributed in various bright shades as all dull colors have been eliminated. 2-year-old bulbs .....	\$1.25	\$8.00
<b>Single Blue Poppy.</b> This attractive type produces large flowers of a fine deep shade. Strong, 2-year-old bulbs .....	1.30	9.00
<b>Single Mixed.</b> Strong, 2-year-old bulbs .....	1.10	7.00

## CALLA LILIES

Well known plant of easy culture; the only particular attention it requires is constant watering, and as warm a room as can be conveniently given it.

	Each	Doz.	100
<b>Devoniensis</b> (The Godfrey Calla). It gives three blooms to one of the ordinary Calla, is snow-white and perfect in form .....	\$0.60	\$6.00	\$40.00
<b>Mrs. Roosevelt.</b> White flowers tinged amber, leaves spotted .....	.35	3.50	25.00
<b>White</b> ( <i>Richardia aethiopica</i> ). The White Calla, or Lily-of-the-Nile, is a well known plant of easy culture. Extra large bulbs .....	.50	5.00	40.00
<b>Yellow Elliottiana.</b> The finest yellow Calla; large, rich, deep golden flowers. The leaves are spotted with white. Delivery in November. Large bulbs .....	.50	5.00	35.00
Mammoth bulbs .....	.75	6.50	45.00

## CALOCHORTUS

(Mariposa or Butterfly Tulips)

The following varieties of these charming California bulbous plants have been selected from a long list because of their hardiness. If given a covering of leaves, they will be able to withstand severe weather.

	Doz.	100
<b>Vesta.</b> White, flushed with lilac or rosy purple; red at center and purple on backs of petals .....	\$1.50	\$10.00
<b>Venustus citrinus.</b> Deep, rich yellow with black center .....	1.00	6.00

## CAMASSIA

There are few bulbous plants that meet climatic or soil conditions better or give a more attractive bloom. They are hardy without protection, and thrive either under ordinary garden conditions or when naturalized in open moist woods or in not too dense a grassy growth. The flower stems are 3 feet high with as many as a hundred star-shaped flowers measuring 1½ inches across and flowering in long succession. September delivery.

	Doz.	100
<b>Esculenta.</b> A purple form, rich in color. Grows 2 feet high. Very showy in masses .....	\$0.50	\$3.00
<b>Leichtlini</b> (Sky-Blue). Grows 3 feet high, with as many as one hundred flowers, of the finest form, star-shaped and about 1½ inches across, flowering in long succession .....	1.30	9.00

## CHIONODOXA

(Glory-of-the-Snow)

A hardy, early flowering, bulbous plant which is closely allied to the Scilla but differs, among other characters, in having a short tube to the corolla. A good companion to the Scilla and Snowdrop.

	Doz.	100	1000
<b>Luciliae.</b> Bright blue with white eye .....	\$0.40	\$2.50	\$22.00
<b>Sardensis.</b> Dark blue with no white .....	.50	2.75	25.00

## CROCUS, Spring-Flowering

### MARSHALL'S NAMED CROCUS

Very early flowering spring bulbs for planting in lawns, borders or terraces. Bulbs should be planted in October. They can also be grown in bowls with prepared fibre or pebbles.

**King of the Whites.** The finest white.  
**Maximilian.** Pure porcelain-blue.  
**Queen of the Blues.** Dark blue.  
**Striped Beauty.** White striped lavender.  
**Golden Yellow.**

All the above: Doz., 40c; 100, \$2.50; 1000, \$23.00.

### MIXTURES OF CROCUS

These comprise mixtures of shades of colors and are best adapted for outdoor planting.

**Large-Flowered Blue and Purple.**  
**Large-Flowered Golden Yellow.**  
**Large-Flowered Striped and Variegated.**  
**Large-Flowered White.**  
**Mixed, All Colors.**

All the above: Doz., 30c; 100, \$2.00; 1000, \$15.00.

## CROCUS, Autumn-Flowering

Suitable for borders, rock gardens and planting with low growing plants. The bulbs arrive in August and should be planted early in the fall.

**Sativus.** The true Saffron Crocus. The leaves appear before the flowers and are fringed with hairs at the edge.

**Speciosus.** The largest of the species. Color delicate blue flaked and blotched with deep violet-blue.

**Zonatus.** A beautiful soft lavender with anthers of white.

All the above: Doz., 40c; 100, \$2.50.



*Amorphophallus Rivieri*



*Camassia, Leichtlini*



## COLCHICUM

(Fall-Flowering Crocus)

These bulbs bloom early in the fall and the foliage follows in the spring. They should be planted early in September.

	Each	Doz.	100
<b>Autumnale alba.</b> White ...	\$0.25	\$2.50	\$18.00
<b>Autumnale alba plena.</b> Double white .....	2.00	20.00	
<b>Autumnale rosea plena.</b> Double pink .....	.60	6.00	40.00
<b>Autumnale major.</b> Large soft violet .....	.30	3.00	20.00
<b>Bornmuelleri.</b> Very large lavender .....	.60	6.00	40.00
<b>Giganteum.</b> Very large, light lavender .....	.35	3.50	25.00
<b>Speciosum.</b> Deep rose-purple .....	.45	4.50	30.00

**Note:** Colchicums cannot be supplied later than September 1st.

## CYPRIPEDIUMS

(Native Orchids)

Charming subjects for planting in acid soil and semi-shade. Fine for naturalizing.

**Acaule.** A glorious plant with broad green leaves from the center of which arise a stem carrying one large, mauve-pink blossom with contrasting twisted sepals. It may be gently forced and does well in pots.

**Pubescens.** Pale yellow flowers in May and June with slightly twisted petals. The plant is found under natural conditions as far north as Newfoundland.

Strong crowns of above two varieties: 3 for 75c; doz., \$2.50; 100, \$18.00.

**Spectabile.** By far the best of the Cypripediums with white to rose-purple flowers. Does exceedingly well in moist or partly shaded bed of peat or leaf mold.

Clumps with 3 to 4 crowns: 3 for \$1.50; doz., \$5.00; 100, \$35.00.

## EREMURUS

(Foxtail Lily or King's Spear)

A noble family of hardy plants, most delightful and desirable for stately and colorful groups in large plant borders and shrubberies. They are perfectly hardy, and when well established, produce dozens of giant flower spikes, like huge hyacinths, attaining a height of from 6 to 10 feet, the flower spikes (comprising several hundred flowers) being from 2 to 3 feet long. They are best planted in early fall and thrive in any sunny, well drained border. They should be planted in early fall only, as it is dangerous to disturb them in spring, when they make an early growth. These wonderful, gigantic flowering plants do not require a great depth of soil, as the fleshy roots spread outwards. The plant disappears above ground after flowering and annuals may be planted close to them to fill the vacant space. A mulching of wood ashes is advised as a winter protection for the crowns and when the flower spikes appear in early spring a slight protection from the late frosts is necessary. We would recommend the Ever Ready Plant Protector, made of waterproof paper.

The following list includes some of the finest and rarest in commerce, flowering in various months, as indicated, in spring and early summer.

	Each	Doz.
<b>Bungei.</b> (July). Vigorous, enormous spikes of widely expanded flowers of clear yellow. 6 feet ..	\$2.00	\$20.00



Eremurus

## DIELYTRA SPECTABILIS

(Bleeding Heart)

Long, drooping racemes of pink flowers. Strong forcing clumps. October delivery. 75c each; \$7.50 per doz. If by mail, add 10c each for postage.

## ERANTHIS HYEMALIS

(Winter Aconite)

A very hardy bulbous plant with beautiful bright yellow flowers, produced in early spring on stems about 6 inches high. Excellent for naturalizing in half shady positions.

50c per doz.; \$3.50 per 100; \$32.00 per 1000.

## EUCHARIS AMAZONICA

(The Amazon Lily)

This unusual plant deserves to be better known for there are few flowers that equal it in fragrance. In the South it makes a good house or garden plant while in the North it requires greenhouse treatment. When well grown the flower stems are 2 feet high and bear five or six pure white flowers at their apex, with each flower measuring 4 to 5 inches in diameter. A warm, humid atmosphere is necessary for this enchanting plant.

Good flowering bulbs: 3 for \$3.00; \$12.00 per doz.

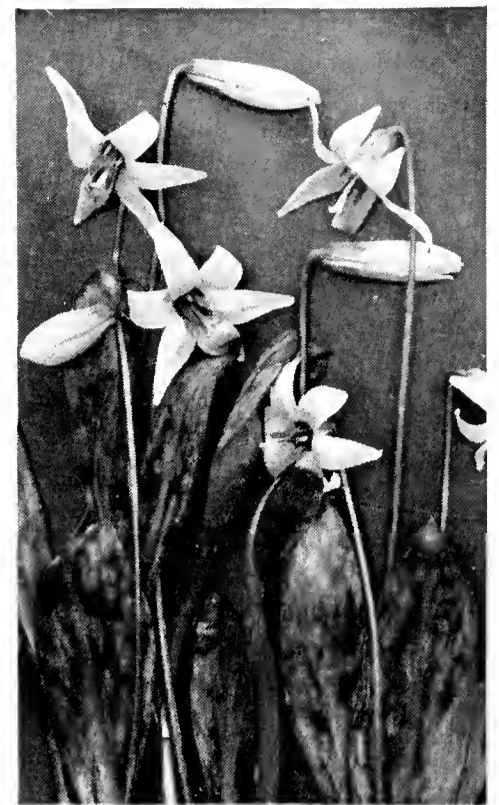
## FRITILLARIA

**Imperialis** (Crown Imperial). One of the most characteristic plants of old-fashioned gardens. It is the most robust of all the species. The flowers are borne in umbels on stout stems, 3 to 4 feet high. Fine mixed, 3 for \$1.30; doz., \$5.00; 100, \$30.00.

**Meleagris** (Guinea Hen Flower). Fritillaria meleagris is sometimes called "The Checkered Lily." It is a dwarf variety with colors predominating in purple and green. Mixed colors, doz., 60c; 100, \$4.00.

**Recurva** (Mission Bells). A free flowering type that thrives in the open. Has beautiful orange-scarlet flowers. Doz., \$2.00; 100, \$12.00.

**Pudica.** A low plant with a single, clear, bright yellow bell, prefers sandy, loose soil. Doz., \$2.00; 100, \$12.00.



Erythronium

## ERYTHRONIUM

(Dog-Tooth Violets)

Charming spring-flowering woodland plants that thrive best in shady places where there is a fair amount of moisture. They are always attractive because of their beautifully mottled foliage. Excellent for shady rock gardens. September delivery.

**Californicum.** Cream colored flowers four to five on a stem. Doz., 75c; 100, \$5.00.

**Citrinum.** Creamy inside with citron center. Doz., 75c; 100, \$5.00.

**Grandiflorum robustum.** A superb species; flowers of the brightest buttercup-yellow. Doz., \$1.00; 100, \$6.00.

**Hartwegi.** A pretty yellow variety with each flower on a separate stem. Doz., 75c; 100, \$5.00.

**Hendersoni.** Flowers of a lovely light purple with deep maroon center. Doz., 75c; 100, \$5.00.

**Revolutum Johnsoni.** The most beautiful of all the Erythroniums. A stout flower producing exquisite rose-pink flowers. Doz., \$1.80; 100, \$12.00.

	Each	Doz.
<b>Elwesianus.</b> (June). Beautiful, delicate pink flowers, thickly set in tall, noble and stately spikes. 8 to 10 feet .....	\$3.00	\$30.00
<b>Elwesianus albus.</b> (June). Pure white flowers similar in form and height to the preceding. A magnificent novelty .....	3.00	30.00
<b>Himalaicus.</b> (May to June). Waxy white flowers with golden anthers, developing huge stems and flower spike. 8 to 10 feet .....	2.50	25.00
<b>Robustus.</b> (June). Rosy pink flowers in a spike 3 to 4 feet long, standing on an 8- to 10-ft. stem. One of the finest in the group ..	3.00	30.00
<b>Shelford.</b> (July). Coppery yellow inside, tinted ruddy bronze outside. Flowers arranged close together on an 8-ft. spike .....	3.00	30.00
<b>Shelford Isobel.</b> July. Orange, shaded pink. A pleasing shade.	3.50	35.00
<b>Warei.</b> (July). A grand hybrid of tall stature, the actual inflorescence being 3 feet long, studded with myriads of coppery pink flowers shot with bronze. A rare plant, very richly colored. 8 ft. .	5.00	50.00

The above are offered in strong flowering, field-grown crowns for October delivery.

## GERBERA

### Jamesoni Hybrids

Elegant, star-shaped flowers in a wonderful variety of colors produced on long stems and when cut retain their freshness for two weeks. We offer the finest strain of brilliant colors.

The plants are not hardy enough for the northern states, but will thrive if given protection in the moderate zones. For greenhouse decoration they have no equal for flower production.

Undivided field clumps, doz., \$6.00; 100, \$45.00.

## GLADIOLUS

The following are suitable for winter forcing. Bulbs are ready for delivery end of November.

### LARGE FLOWERING VARIETIES

	Doz.	100
<b>Albatross.</b> A beautiful pure white ..	\$1.25	\$8.00
<b>Betty Nuthall.</b> A warm light coral with pale orange throat .....	.60	4.00
<b>Los Angeles.</b> A beautiful grenadin or orange tinted pink .....	.75	5.00
<b>Loyalty.</b> A large, ruffled, deep golden yellow. Tall, strong grower ...	1.00	7.00
<b>Joerg's White.</b> Pure white flowers of enormous size .....	1.10	7.00
<b>Joerg's Yellow.</b> Flower spike five feet high with twelve to eighteen large pure yellow flowers .....	.75	5.00
<b>Mrs. Frank Pendleton.</b> Lovely flushed salmon-pink with carmine throat..	.60	4.00
<b>Mrs. Leon Douglas.</b> Begonia-rose, striped flame. Lower petals pale yellow .....	.75	5.00
<b>Picardy.</b> Soft apricot-pink. A most attractive variety .....	1.25	8.00
<b>Virginia.</b> A very large spike of crimson-scarlet flowers .....	.65	4.00

### Books on Iris

**THE IRIS** By John C. Wister  
A treatise on the History, Development and Culture of the Iris. 128 pages. Fully illustrated. Postpaid, \$1.25.

**IRIS** By F. F. Rockwell  
A handy guide showing uses and effects possible with all types of Iris. Tells the soils best adapted, etc. 80 pages. 54 illustrations. Postpaid, \$1.00.

## GLADIOLI PRIMULINUS HYBRIDS

	Doz.	100
<b>Alice Tiplady.</b> Orange-saffron .....	\$0.60	\$4.00
<b>Phantasy.</b> A clear salmon-pink with coral margin. Lower petals pale yellow, edged pink .....	.75	5.00
<b>Souvenir.</b> A fine deep yellow .....	.60	4.00
<b>White Butterfly.</b> A popular white with creamy white throat .....	.75	5.00

## Gladiolus Nanus

(Colville Type)

Small flowering Gladiolus, best adapted for forcing. Plant 6 bulbs in 6-inch bulb pans and grow in moderate temperature. They are not hardy enough for outside planting.

	Doz.	100
<b>Peach Blossom.</b> A lovely shade of the most delicate pink .....	\$1.00	\$ 7.00
<b>Tristis.</b> An excellent variety for forcing. The flowers are creamy white on long, wiry stems .....	1.75	12.00

## GLORIOSA ROEHRSIANA

A gorgeous, Lily-like plant, climbing from 6 to 10 feet high and bearing a profusion of orange-scarlet flowers. A beautiful plant for greenhouse or conservatory use. Dormant tubers. October delivery. Each, \$1.50.

## GRAPE HYACINTHS

(Muscari)

Charming, hardy spring-flowering bulbs. They are something like the Hyacinth, but the clusters are smaller and the individual flowers are smaller and of different shape. Invaluable for naturalizing.

	Doz.	100	1000
<b>Azureus.</b> A very pretty Cambridge blue .....	\$0.60	\$3.50	\$30.00
<b>Botryoides.</b> Blue .....	.40	2.50	20.00
<b>Botryoides.</b> White .....	.50	3.00	25.00
<b>Heavenly Blue.</b> This is the best and largest of the Grape Hyacinths .....	.50	3.00	25.00
<b>Plumosum</b> (Feather Hyacinth). Large plumes of lilac-purple .....	.90	6.00	



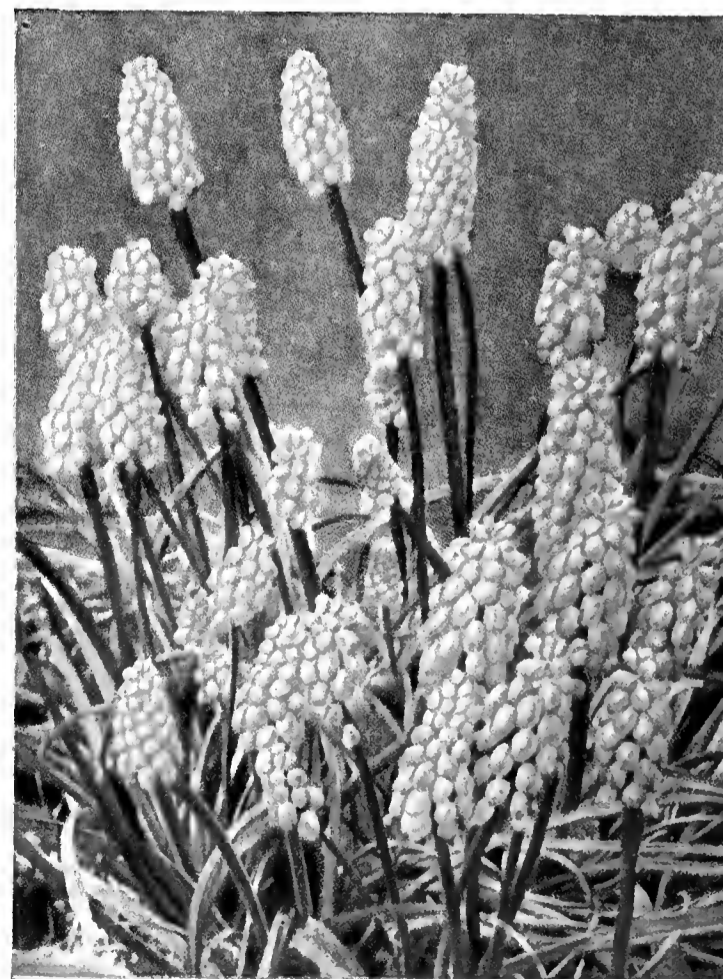
Mrs. Frank Pendleton



Iris, Wedgewood



Calla Lily, Elliottiana



Grape Hyacinth (Muscari)



## FREESIA

This is one of the most beautiful of all Cape bulbs, possessing a peculiar grace of form, and its fragrance is most delightful, one pot of five or six bulbs being sufficient to perfume a whole house. As cut flowers, they are extremely valuable.

### WHITE VARIETIES

	Doz.	100	1000
<b>Elders Giant White.</b> Very large white, strong stem and foliage. Monster bulbs.	\$1.20	\$8.00	\$75.00
<b>Purity.</b> A magnificent, snowy white, of very large size and great length of stem. A truss bearing from 8 to 10 buds, of which 6 are often open at once. Monster bulbs.	.60	3.50	30.00
<b>White Chief.</b> A strong growing pure white variety which has become very popular. We are now able to supply bulbs at a very reasonable price. Monster bulbs.	.60	4.00	35.00

### COLORED FREESIAS All Largest Size Bulbs

	Doz.	100	1000
<b>Apotheose.</b> A sterling novelty. Color pink, lavender tinted ...	\$1.00	\$5.50	\$50.00
<b>Golden Daffodil.</b> A choice hybrid with immense flowers of soft Daffodil-yellow.	.70	4.50	40.00
<b>Golden Treasure.</b> A counterpart of the above, but with lavender featherings on outside of petals ...	.70	4.50	40.00
<b>Maryon.</b> Violet-mauve.	1.80	12.00	110.00
<b>Miss Blanch Blue.</b> Large flowering, deep bluish lavender.	1.00	6.00	55.00
<b>Mrs. Marc Peter.</b> Rosy pink, blotched orange and yellow ...	.70	4.50	40.00
<b>Sunset.</b> A beautiful sunset shade ...	.80	5.00	45.00
<b>Tangerine.</b> Pure tangerine orange ...	1.00	6.50	60.00



Japanese Iris

## HELLEBORUS NIGER

### (The Christmas Rose)

This interesting hardy plant can be grown in any sheltered position. Frost and snow apparently have little effect on its blooming, as whenever a thaw happens in the early winter, their flowers appear untouched by ice and snow.

The color is white, suffused with pink, and if sheltered in a glass cold frame they will turn almost pure white, on stems from 6 to 12 inches in length, flowers from 2 to 3 inches across. Extra strong clumps, \$1.00 each; \$10.00 per doz. Delivered free in September and October.



Freesias

## IRIS, DUTCH or HOLLAND

This Iris is a giant strain of the Spanish Iris. The flowers are of enormous size and it has the advantage of coming into bloom two weeks earlier than the Spanish.

**Dr. Haring.** Creamy white falls with deep yellow blotch. Standards, silvery lavender.

**Huchtenburg.** Falls deep yellow. Standards lovely pale blue.

**Poggenbeek.** Standards and falls uniform dark blue.

**White Excelsior.** Very large, pure white.

**Yellow Queen.** Uniform yellow of splendid height and size. Very early.

Large bulbs, any of the above varieties: \$1.25 per doz.; \$8.00 per 100. October delivery.



Fritillaria Imperialis

## SPANISH IRIS

Graceful, slender stems, with loose but beautiful flowers, the charming colors producing a combination not surpassed by an orchid. The finest effects are produced when planted in clumps in the perennial border; flowering period May and early June. They are also excellent for growing in pots indoors or for forcing.

We have secured a large quantity of northern grown bulbs, which, although smaller than the California bulbs, are all hard, firm bulbs that will give more and larger flowers.

**British Queen.** Large pure white.

**Cajanus.** Canary-yellow with orange-yellow blotch.

**King of the Blues.** A fine, deep purplish blue.

**Longfellow.** Light blue with lighter falls.

**Prince Henry.** Large purplish bronze; one of the best.

**Mixed.** All colors.

Price of any of the above varieties: 4 bulbs for 50c; doz., \$1.00; 100, \$6.00. Not less than four bulbs of one variety sold.

## ENGLISH IRIS

The English Iris are among the finest of all the Iris group, coming into flower at the end of June. As a cut flower it is invaluable. The bulbs may be planted outside with a winter mulching.

**Emperor.** Large, deep blue, flaked darker.

**Lamartine.** White with carmine and rosy blotches.

**Mont Blanc.** Large, pure white.

**Prince Albert.** Delicate silvery blue.

**Queen of the Blues.** Pure clear blue.

Price. Any of above: Doz., \$1.50; 100, \$10.00.

## FORCING IRIS

### For Christmas Blooming

**Wedgewood.** We are in a position to supply pre-cooled bulbs of this beautiful Iris, that can be brought into bloom for Christmas with an assurance of 100 per cent blooms. Wedgewood is best described as a rich deep blue with a yellow blotch at the top of each fall enhancing its beauty. 25 for \$4.00; \$14.00 per 100.

### DUTCH IRIS

**Yellow Queen.** (Pre-cooled). For description see above. 25 for \$3.00; 100, \$10.00.

### OTHER FORCING IRIS

**Wedgewood.** For later forcing. See description above. 3 for 60c; doz., \$1.75; 100, \$13.00.

**Imperator.** Large flowers of bright blue. \$1.10 per doz.; \$7.00 per 100.



English Iris

## IRIS GERMANICA

(German Iris)

There is no flower that is more easily grown than the Iris, and none that will produce a wider range of color. The varieties listed below are some of the world's finest.

In the description, "F" represents falls, and "S" represents standards.

**Ambassador.** Late, ruby red. A gigantic flower on tall, stout stem.

**Cleopatra.** Very soft amber.

**King of Iris.** S. lemon-yellow; F. rich maroon bordered yellow.

**Lohengrin.** S. and F. light lilac-pink with a soft silvery sheen.

**Loreley.** S. light yellow. F. deep sea blue with cream edging.

**Mist.** Lavender-blue, giving an effect of shading.

**Mother of Pearl.** Very large with mother of pearl colorings, having a white throat, overlaid with gold.

**Pallida Dalmatica.** Clear lavender-blue, shading to pale silvery blue.

**Princess Victoria Louise.** S. sulphur-yellow. F. rich plum-bordered cream.

**Rhein Nixe.** S. pure white; F. deep violet-blue with white edge.

**Royal Purple.** Deep violet-purple.

**Windham.** Deep warm pinkish lavender.

**White Knight.** Pure white.

Prices: Strong flowering clumps, 3 for 75c; \$2.50 per doz.

Collection of 1 each, 12 plants for \$2.50.

Collection of 3 each, 36 plants for \$6.50.

We can supply varieties not listed at current prices.

## SIBERIAN IRIS

Narrow, glossy foliage, delicate flowers on tall stems. Excellent for cutting as the blooms keep well in water and can be used with other flowers.

**Sibirica orientalis.** Purplish blue. 2 to 3 ft. 3 for \$1.50; 10 for \$4.00.

**Sibirica, Perry's Blue.** A large flower of clear blue with horizontal falls. 4 ft. 3 for \$2.50; 10 for \$7.00.

**Sibirica, Snow Queen.** Flowers snow-white. A very attractive plant. 3 for \$1.50; 10 for \$4.00.

## IRIS RETICULATA

An exceedingly pretty and sweet spring flower coming into bloom with the Crocus. It is very hardy, producing purplish blue flowers with gold center. 4 inches high. 3 for 75c; \$2.50 per doz.; \$16.00 per 100.



Lachenalia Pendula Superba

## IRIS CRISTATA

A dwarf native species with handsome light colored flowers and short thick green foliage. 4 to 8 in. May. Excellent for rock gardens.

Strong clumps, 3 for 75c; \$2.50 per doz.; \$18.00 per 100.

## JAPANESE IRIS

The Japan Iris is perfectly hardy and flowers in great profusion in July and August.

The large size of the flowers is noteworthy, as they often reach 6 to 8 inches across in most fascinating combinations.

**Betty Holmes.** Pure white.

**Catherine Parry.** Double, blue overlaid rosy red.

**Eleanor Parry.** Double, claret-red, flamed white and blue.

**Fascination.** Double, blue lightly veined white, pink tinge.

**Grace Sperling.** Single, hortense violet, petaloid stigmas light hortense violet. Very early.

**Gold Bound.** Large, pure white, yellow center.

**Helen von Siebold.** Reddish violet, veined white.

**Lucie Marshall.** An immense double with six petals of pansy-violet in color with distinct white veins coming from a golden yellow center. Stems 4 feet.

**Oriole.** Large, double flowers of rich plum-red, shaded deep purple.

**Pyramid.** Light blue, center of petals veined white.

**Templeton.** Double light blue flowers mottled rose and white.

**Victor.** White, veined violet-blue, purple center.

Price of strong clumps: 3 for \$2.00;

\$5.00 per doz.

**Japanese Iris, Double and Single Mixed.** All colors and shades. Large, individual clumps. \$4.00 per doz.; \$30.00 per 100.

## IXIAS

**Afterglow.** Orange.

**Bucephalus Major.** Large red.

**Hogarth.** Giant white.

**Lady Slade.** Pink.

**Mozart.** Lemon-yellow.

Prices of all of the above: 80c per doz.;

\$5.00 per 100.

## LACHENALIA Nelsoni

Produces flowers in March with a delightful shading of green and yellow.

Prices, flowering bulbs: 4 for \$1.00;

25 for \$5.75; \$22.00 per 100.

## LACHENALIA Pendula Superba

The finest of all the Lachenalia family and most suitable as an attractive Christmas pot plant. The pendulous flowers are produced on thick fleshy stems about 10 to 12 inches in height and remain a long time in bloom. The color is a most beautiful velvety shading of orange-red with a blending of purple at tips.

**Cultural Directions.** The bulbs may be planted five or six in a 5-inch pot in a compost of two parts sandy loam and one part leaf mold, placing them in a layer of sharp sand. Water only once until growth is started. Place in cold frame until weather becomes too cold, then move to a cool greenhouse. Water may be used frequently in growing stage and liquid manure can be used while in bud.

**House Culture.** Follow the above directions in potting, then place in a cool room and when growth is well advanced the pots may be placed in a warm, sunny window for flowering.

Prices, flowering bulbs: 4 for \$1.00;

25 for \$5.75; \$22.00 per 100.

## LEUCOJUM

(Spring Snowflake)

Charming early flowering bulbs, producing flowers like Giant Snowdrops on stems 1 foot high. Perfectly hardy. Doz., \$1.80; 100, \$5.00.

## LEUCOCORYNE

(Ixioides Odorata)

A fine cut flower for the cool greenhouse. Flowers light blue with white center on tall stems with a faint fragrance. Culture similar to Freesias. Doz., \$3.50; 100, \$25.00.

## LILY-OF-THE-VALLEY

For forcing, the pips are to be preferred, being grown under conditions tending to promote vigorous and early blooming. Twelve to eighteen pips may be planted in a 6-inch pot, with all the fibrous roots carefully preserved, and keeping the crowns above the soil.

**Marshall's Matchless Pips.** The earliest, largest and best for forcing. Extra strong pips with long roots producing flowers with 15 to 20 bells and fine foliage. \$8.00 per 100; \$18.00 per 250; \$60.00 per 1000. Ready in December.

**Field Grown Clumps.** We recommend fall planting of Lily-of-the-Valley for outdoor culture and can supply exceptionally vigorous, field-grown clumps at 3 for \$1.50; \$5.00 per doz.

## LILY-OF-THE-VALLEY PIPS

From Cold Storage

We have in storage a large quantity of Dresden Pips for forcing at any season of the year.

Lily-of-the-Valley can be forced in about four weeks from cold storage pips. We cannot supply less than 250 pips.

**Marshall's Matchless Pips.** Case of 250 for \$20.00.

## LYCORIS SQUAMIGERA

A perfectly hardy bulb of the Amaryllis family. They produce attractive green foliage in the early spring, which later dies away, and about a month later the flower stalks appear, growing about 2 feet high and developing an umbel of large lily-shaped, delicate pink flowers shaded with clear blue.

**Extra Large Flowering Bulbs.** Each, \$1.00; doz., \$10.00; 100, \$70.00.

## LYCORIS PURPUREA

The bud is wine-color changing to royal purple when expanded, giving a startling and beautiful effect. Perfectly hardy. 18 inches high.

**Strong Flowering Bulbs.** Each, \$1.25; doz., \$12.00; 100, \$75.00.



Lycoris Squamigera



# HARDY LILIES of Outstanding Merit

## NEW HYBRID LILIES

**Dr. Griffiths' Hybrids.** The late Dr. Griffiths was successful in raising some remarkable hybrids by using *L. Humboldti*, *L. Pardalinum* and *L. Parryi* as parentage. The prevailing colors are cadmium-orange, faintly flushed red with green at base. All heavily spotted black to red. We offer *Shuksan* as one of the best.

**Shuksan.** \$1.00 each; 3 for \$2.75; \$10.00 per doz.

**Maxwill.** An excellent hybrid of *Maximowiczii* and *L. Wilmottiae*, combining the lateness of the former with the free flowering qualities of the latter. \$1.00 each; 3 for \$2.75; \$10.00 per doz.

**The Creelman Lily.** The best hybrid between *L. Regale* and *L. Sargentiae*. We offer large flowering bulbs from seedlings of above. \$1.50 each; 3 for \$4.00; \$15.00 per doz.

**The Sunset Lily** (*L. Chinooki* or *L. Pardalinum giganteum*). Supposed to be a natural hybrid of *L. Humboldti* and *L. Pardalinum*, combining the sturdiness of both species. Tall in growth. Color brilliant red with yellow center and freely spotted maroon. Large flowering bulbs. 75c each; 3 for \$2.00; \$7.50 per doz.; \$60.00 per 100.

## Marshall's Fall Collection of Hardy Lilies

We have prepared the following collection of hardy Lily bulbs for delivery in October, a most suitable time for planting, if planted according to directions, should produce an abundance of bloom throughout the entire season commencing with *L. Tenuifolium* in May and finishing with *L. Speciosum* in September, and if left alone will increase in beauty and numbers from year to year.

Three good flowering bulbs of each of the following varieties in a wide range of color (24 bulbs in all).

- |   |   |
|---|---|
| <b>Elegans, Peter Barr.</b> Large, glowing yellow.    | <b>Speciosum melpomene.</b> White, rosy red blotches. |
| <b>Henryi.</b> Bright orange-yellow, green center.    | <b>Superbum.</b> Orange-red, spotted purple.          |
| <b>Philippinense formosanum.</b> Long, white trumpet. | <b>Tenuifolium.</b> Nodding rich scarlet flowers.     |
| <b>Regale.</b> White with pink shadings on back.      | <b>Umbellatum erectum.</b> Large brilliant red.       |

The above collection of 24 good flowering bulbs with cultural directions. Value \$7.25. Sent postpaid for \$5.00.

Note—If any of the above varieties are not desired, substitutes can be chosen from the following.

- |  |  |
|--|--|
| <b>Amabile.</b> Grenadin-red, spotted black. | <b>Martagon.</b> Clusters of purple flowers. |
| <b>Cernuum.</b> Pink, spotted wine color.    | <b>Tigrinum.</b> The Tiger Lily.             |



*Lilium Longiflorum Praeox*

## A HARDY EASTER LILY

(*Lilium Longiflorum Praeox*)

It has been possible to plant Easter Lilies, in the garden, in spring and have them bloom during the summer, but unfortunately these have not proven permanent. We are now in a position to offer you *Lilium Longiflorum Praeox*, which is perfectly hardy and should remain in your garden as a real perennial. This variety is entirely distinct from the ordinary *Lilium Longiflorum*, as the bulbs make an exceptionally strong root growth and produce new bulbs to insure permanency. The bulbs we offer are liable to produce three flower stems and each one carrying fine heads of bloom.

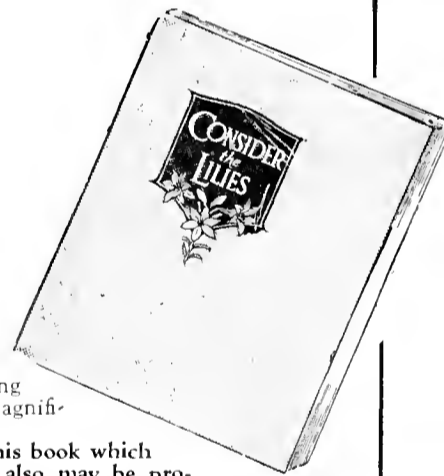
Price, good flowering bulbs, 75c each; 3 for \$2.00; \$7.50 per doz.; \$56.00 per 100.

## "Consider the Lilies"

In presenting this treatise, Mr. W. E. Marshall, the author, was prompted by a desire to assist the amateur but his wishes have gone beyond his expectations as his brochure is now recognized by experts as a text book on this interesting genus.

Over one hundred varieties are described with complete history and cultural directions. A most interesting book to read, illuminated with 67 magnificent colored plates.

There is only a limited supply of this book which will be sent postpaid for \$2.00. It also may be procured free with a cash purchase of Lily bulbs amounting to ten dollars.



## LILIES for FORCING

### *Lilium Harrisii*

	Each	Doz.	100
<b>First Size Bulbs.</b>			
7-9 in. ....	\$0.35	\$3.50	\$25.00
<b>Mammoth Bulbs.</b>			
9-11 in. ....	.60	6.00	45.00
<b>Jumbo Bulbs.</b>			
11-13 in. ....	1.00	11.00	80.00
A few selected single crown bulbs for exhibition purposes, measuring 12-14 in. \$1.75 each; \$18.50 per doz.; case of 25 bulbs for \$35.00.			

### *Lilium Nobile*

A form of *L. Formosum* but distinct in character.

	Doz.	100
<b>Monster Bulbs.</b> 11-12 in. ....	\$7.00	\$50.00

### *Lilium Longiflorum Giganteum*

This variety flowers somewhat later than *Multiflorum*, but the flowers are of larger size, of great substance and perfect form.

	Doz.	100
<b>Monster Bulbs.</b> 10-12 in. ....	\$5.50	\$40.00

### *Lilium Formosum*

The Erabu type from the Island of Formosa. Pure white flowers, larger than those of *L. Harrisii*.

#### BLACK STEM STOCK

	Doz.	100
<b>Monster Bulbs.</b> 10-12 in. ....	\$6.00	\$40.00
<b>Jumbo Bulbs.</b> 11-13 in. ....	9.00	70.00

### *Lilium Sinensis Pluratum*

A new variety resembling *Formosum* in the individual flowers which are produced in profusion, from 3 to 4 spikes coming from one bulb. This characteristic makes it most adaptable as a pot plant and the bulbs have been in great demand by florists. An excellent Lily for cold storage purposes.

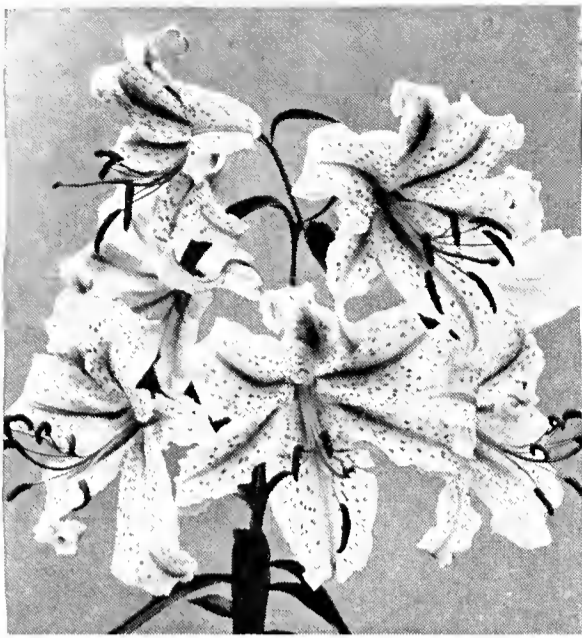
	Doz.	100
<b>Mammoth Bulbs.</b> 9-10 in. ...	\$5.50	\$40.00
<b>Monster Bulbs.</b> 10-12 in. ...	8.00	55.00

### Seeds of Lilies

Many Lilies may be grown successfully from seeds, many coming into bloom in two years. Write for our list, giving varieties and cultural directions.

# Marshall's Matchless

Among the stateliest of all hardy plants, Lilies, during their respective flowering seasons, constitute the chief attraction in the hardy border. They prefer a well drained soil, and should remain undisturbed for years. In the autumn give the bulbs a heavy mulching of leaves; coarse manure or straw will prove highly beneficial.



Lilium Auratum Platyphyllum



Lilium Henryi

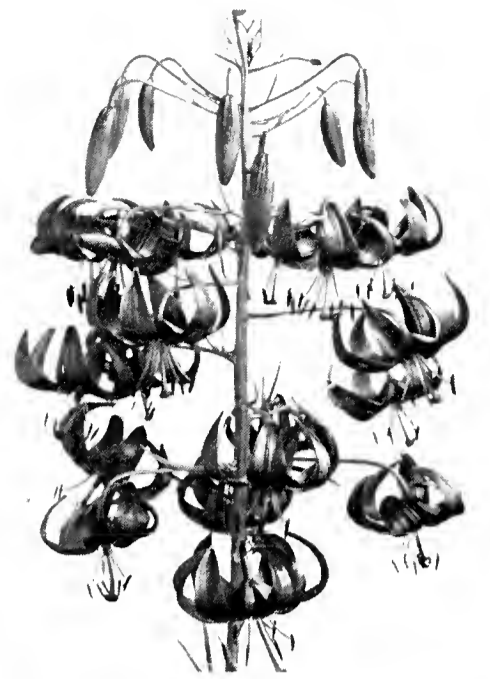


Lilium Browni

Variety	Size of Bulb	Each	Three	Doz.	100
Amabile. Grenadin-red, spotted black	3/4	\$0.50	\$1.35	\$5.00	\$35.00
Auratum platyphyllum, Golden banded Lily	8/9	.45	1.25	4.50	32.00
" " Golden banded Lily	9/11	.75	2.00	7.50	58.00
" " Golden banded Lily	11/13	1.00	2.75	10.00	75.00
" " rubrum vittatum. With red bands	5/6	3.50	10.00	35.00	
" Crimson Queen. Broad crimson bands	5/6	5.00	14.00	50.00	
" pictum. Red tips on edge of petals	8/9	1.00	2.75	10.00	75.00
Backhouse Hybrids	(Write for prices).				
Bakerianum (Lowi). For pot culture	5/6	2.00	5.50	20.00	
Batemanniae. Many apricot colored flowers on a stem	6/8	.50	1.35	5.00	35.00
Bolanderi. Bell-shaped, deep crimson, dotted purple	4/6	1.00	2.75	10.00	75.00
Browni. Creamy white inside; rich purple outside	9/11	1.00	2.75	10.00	75.00
Bulbiferum. Yellow-orange; tips of petals flame	4/6	.40	1.10	4.00	30.00
Canadense. Bell-shaped; yellow, spotted black	1st		.40	1.50	10.00
" flavum. Yellow flowers	1st		.60	2.00	15.00
" rubrum. A fine red Lily	1st		.60	2.00	15.00
Callosum. Orange-red self. A rare and beautiful Lily	2/3	.50	1.35	5.00	35.00
Candidum. The old-fashioned Madonna Lily	9/11	.30	.80	3.00	20.00
" The old-fashioned Madonna Lily	11/13	.50	1.35	5.00	35.00
" The old-fashioned Madonna Lily	13/15	.75	2.00	7.50	60.00
" speciosum. Like the above with dark stems	7/9	1.00	2.75	10.00	75.00
Carolinianum. Reflexed orange flowers spotted maroon	1st	.50	1.35	5.00	35.00
Centifolium. A giant trumpet-shaped white, sulphur inside.	2/3	1.50	4.00	15.00	
" A giant trumpet-shaped white, sulphur inside.	3/5	2.50	6.75	25.00	
Cernuum. A deep lilac-pink, spotted wine color	3/4	.40	1.10	4.00	30.00
Chalcedonicum. The scarlet Turk's Cap	7/9	2.00	5.50	20.00	
" maculatum. Dark scarlet, spotted black	7/9	2.50	6.75	25.00	
Columbianum. Bright golden yellow, spotted maroon	5/6	.35	.95	3.50	25.00
Concolor, Dropmore Variety. Deep crimson with dark spots.	small	.35	.90	3.50	25.00
Cordifolium. Resembles L. giganteum himalaicum	4/6	.75	2.00	7.50	58.00
Coridion. The color is deep yellow, with dark spots	small	.35	.90	3.50	25.00
Croceum (The Orange Lily). Flowers orange color	6/8	.50	1.35	5.00	38.00
" (The Orange Lily). Flowers orange color	9/11	.75	2.00	7.50	58.00
Davidi. A Chinese Lily with cinnabar-red flowers	4/6	.60	1.65	6.00	45.00
Davuricum Upright, scarlet flowers, dotted black	4/6	.40	1.10	4.00	30.00
Elegans, Alice Wilson. Lemon-yellow, darker in center	3/5	.40	1.10	4.00	30.00
" atrosanguineum. Velvety crimson	3/5	.25	.70	2.50	18.00
" bicolor. Marbled flowers in rich tones	3/5	.25	.70	2.50	18.00
" Leonard Joerg. Apricot, with dark spots	3/5	.25	.70	2.50	18.00
" Mahony. A new variety. Intense rich maroon, suffused mahogany	3/5	.50	1.35	5.00	38.00
" Prince of Orange. Luminous, intense orange	3/5	.25	.70	2.50	18.00
" Peter Barr. An immense flower of purest yellow.	3/5	.50	1.35	5.00	35.00
" Mixed. A splendid mixture of fine colors	3/5		.60	2.00	14.00
Farreri. A new Lily; rare, choice. White with purple dots.	small	2.50	6.75	25.00	
Giganteum himalaicum. Tallest of all Lilies. Long, tubular, pure white flowers, tinged purple inside.	9/11	3.50	10.00	35.00	
" " Tallest of all Lilies. Long, tubular, pure white flowers, tinged purple inside.	11/13	5.00	14.00	50.00	
Grayi. Small, rich red flowers, spotted maroon	1st	.50	1.35	5.00	35.00
Hansoni. Flowers yellowish orange	8/9	.50	1.35	5.00	35.00
" Flowers yellowish orange	9/11	.75	2.00	7.50	55.00
Henryi (The Yellow Speciosum). Bright orange-yellow	8/9	.50	1.35	5.00	35.00
" (The Yellow Speciosum). Bright orange-yellow	9/11	.75	2.00	7.50	58.00
" (The Yellow Speciosum). Bright orange-yellow	11/13	1.00	2.75	10.00	75.00
Humboldti magnificum. Orange-red, spotted maroon	7/9	1.25	3.50	12.00	90.00
" bloomerianum. A miniature form of Humboldti.	4/6	.75	2.00	7.50	55.00
Japonicum Alexandrae. A charming Lily with large white flowers	4/6	.75	2.00	7.50	55.00
" Krameri. Soft pink flowers; fragrant	7/9	.40	1.10	4.00	30.00
Kelloggi. Very fragrant, purplish pink flowers	4/6	1.25	3.50	12.00	
Longiflorum multiflorum. Pure white, trumpet shape	8/10	.40	1.10	4.00	30.00
" " Pure white, trumpet shape	10/12	.60	1.65	6.00	45.00
" " albo-marginatum. Variegated foliage.	5/6	.75	2.00	7.50	
Marhan. Orange with reddish brown spots	5/7	3.00	8.00	30.00	
Maritimum. Bell-shaped, deep crimson, lightly dotted	1st	.75	2.00	7.50	
Martagon (Turk's Cap Lily). Clusters of purple flowers	4/6	.40	1.10	4.00	30.00
" album. Clusters of waxy white flowers	4/6	.60	1.65	6.00	45.00
" dalmaticum. Bell-shaped flowers of glossy purple.	5/7	2.50	6.75	25.00	
" " catanae. Deep glossy crimson	5/7	2.50	6.75	25.00	

# HARDY LILIES

Variety	Size of Bulb	Each	Three	Doz.	100
<b>Maximowiczii.</b> Vivid orange-red with dark spots	4/5	\$0.40	\$1.10	\$ 4.00	\$30.00
<b>Maxwill (New Hybrid).</b> See page 15	5/6	1.00	2.75	10.00	
<b>Medeoloides.</b> Scarlet with apricot shadings	small	.60	1.65	6.00	45.00
<b>Monadelphum (Colchicum).</b> Deep straw, spotted black	7/9	1.50	4.00	15.00	110.00
<b>Nepalense (Ochraceum).</b> Greenish gold with center of vinous purple	10/12	3.00	8.00	30.00	
<b>Pardalinum.</b> Bright orange, spotted with dark crimson	7/9	.35	.95	3.50	25.00
<b>Parryi.</b> Sweetly scented lemon-yellow flowers	small	1.50	4.00	15.00	
<b>Parvum.</b> A reddish orange, shading to orange at center	small	.75	2.00	7.50	55.00
" <b>luteum.</b> Clear yellow flowers	small	.75	2.00	7.50	55.00
<b>Philadelphicum.</b> Yellow, cup-shaped flowers, spotted maroon	1st	.25	.70	2.50	18.00
<b>Philippinense formosanum.</b> White with reddish brown exterior	4/6	.40	1.10	4.00	30.00
"    " <b>Improved white</b>	6/7	.50	1.35	5.00	38.00
<b>Pomponium (True).</b> A magnificent Lily with intense scarlet-red blooms	5/7	1.25	3.50	13.00	
<b>Pyrenaicum aureum (Yellow Turk's Cap Lily)</b>	7/9	1.00	2.75	10.00	75.00
" <b>rubrum.</b> Orange-scarlet, spotted maroon	7/9	1.25	3.50	12.00	
<b>Regale.</b> White shading to brown and pink; yellow throat	5/7		.50	1.75	12.00
"    White shading to brown and pink; yellow throat	7/9	.35	.90	3.25	24.00
"    White shading to brown and pink; yellow throat	9/10	.50	1.35	5.00	35.00
"    White shading to brown and pink; yellow throat	10/12	.75	2.00	7.50	55.00
"    White shading to brown and pink; yellow throat	12/14	1.00	2.75	10.00	75.00
<b>Rozli.</b> Blood-red, dotted maroon	small	.75	2.00	7.50	
" <b>Crimson.</b> Deep blood-red, lightly dotted maroon	small	.75	2.00	7.50	
<b>Rubellum.</b> Rose-pink, with yellow anthers	5/6	.40	1.10	4.00	30.00
<b>Rubescens.</b> White dotted purple	6/7	1.25	3.50	12.00	90.00
<b>Sargentiae.</b> Milk white flowers with yellow throat	4/6	1.25	3.50	12.00	90.00
<b>Sinensis pluratum.</b> White trumpets; delightfully fragrant	9/10	.55	1.50	5.50	40.00
<b>Speciosum album.</b> Beautiful, pure white flowers of large size	8/9	.40	1.10	4.00	30.00
"    "    Beautiful, pure white flowers of large size	9/11	.60	1.65	6.00	45.00
" <b>rubrum magnificentum.</b> White, shaded rose and spotted crimson	8/9	.25	.70	2.50	18.00
" <b>rubrum magnificentum.</b> White, shaded rose and spotted crimson	9/11	.35	.95	3.50	25.00
" <b>rubrum magnificentum.</b> White, shaded rose and spotted crimson	11/13	.55	1.50	5.50	40.00
" <b>rubrum magnificentum.</b> White, shaded rose and spotted crimson	13/15	1.00	2.75	10.00	75.00
" <b>rubrum melpomene.</b> Darker than Magnificum	8/9	.30	.80	3.00	22.00
"    "    "    Darker than Magnificum	9/11	.40	1.00	4.00	30.00
"    "    "    Darker than Magnificum	11/13	.60	1.65	6.00	45.00
"    "    "    Darker than Magnificum	13/15	1.10	3.00	11.00	80.00
<b>Sulphureum.</b> Large flowers of pale yellow, outside streaked claret-red	10/12	1.50	4.00	15.00	110.00
"    Large flowers of pale yellow, outside streaked claret-red	11/13	2.00	5.50	20.00	150.00
<b>Superbum.</b> Flowers bright orange-red, thickly spotted with purple	5/7	.25	.70	2.50	18.00
"    Flowers bright orange-red, thickly spotted with purple	7/9	.50	1.35	5.00	38.00
<b>Tenuifolium (Siberian Coral Lily).</b> Nodding, rich scarlet flowers	2/4		.50	1.75	12.00
" <b>Golden Gleam.</b> A delightful golden apricot shade	2/4	.35	.95	3.50	25.00
<b>Testaceum (Nankeen Lily).</b> A shading of soft apricot	7/9	1.50	4.00	15.00	110.00
"    (Nankeen Lily). A shading of soft apricot	9/11	2.00	5.50	20.00	150.00
<b>Tigrinum flore pleno (Double Tiger Lily)</b>	5/6	.30	.80	3.00	22.00
" <b>Fortunei.</b> An improved type of this old favorite	6/8	.40	1.10	4.00	30.00
" <b>splendens (Single Tiger Lily)</b>	6/8	.25	.65	2.50	18.00
" <b>splendens (Single Tiger Lily)</b>	10/12	.40	1.10	4.00	30.00
<b>Umbellatum erectum.</b> A splendid form. Rich red	7/9	.25	.65	2.50	18.00
" <b>Golden Fleece.</b> Splendid yellow, edged red	5/6	1.50	4.00	15.00	
" <b>grandiflorum.</b> Orange-red; very fine	7/9	.25	.65	2.50	18.00
" <b>Mixed.</b> Yellow, orange and crimson shades	7/9	.25	.65	2.50	18.00
<b>Wallacei.</b> A rosy apricot with dark spots	3/5	.35	.95	3.50	25.00
<b>Ward's Lily (The Pink Martagon)</b>	3/4	3.50	10.00	35.00	
<b>Washingtonianum.</b> Large flowers of a rich wine color	8/10	1.00	2.75	10.00	75.00
<b>Wilmottiae.</b> Graceful heads of orange-red flowers	4/6	.50	1.35	5.00	38.00
"    Graceful heads of orange-red flowers	7/9	1.00	2.75	10.00	75.00



Lilium Tenuifolium



The Creelman Lily



Lilium Philippinense Formosanum



# Marshall's PEONIES

(Ready in  
September)

The Peony roots offered by us are vigorous flowering sized clumps of from 3 to 5 eyes. Peonies are gross feeders and the ground in which they are planted cannot be too heavily fertilized.

The best time to plant is September 1st to freezing. The crowns should be planted from 2½ to 3 inches below the surface of the soil.

	Each	Doz.		Each	Doz.
<b>Adolphe Rousseau.</b> Dark velvety red with hues of garnet, giving a distinct metallic effect; midseason . . .	\$2.00	\$20.00			
<b>Albatre.</b> Milk-white with cream center; ruby markings; large flowers; midseason . . . . .	1.00	10.00			
<b>Albert Crousse.</b> Delicate shell-pink; petals imbricated; very large, tall and late . . . . .	1.75	17.50			
<b>Alsace-Lorraine.</b> Rich creamy white, tinted yellow; large, imbricated petals; midseason . . . . .	1.25	12.00			
<b>Couronne d'Or.</b> Tall, white, slightly speckled crimson; golden stamens; late . . . . .	1.00	10.00			
<b>Duchesse de Nemours.</b> Sulphur white with touch of green in center; early . . . . .	1.00	10.00			
<b>Edulis Superba.</b> Bright clear deep pink; very early and fragrant . . . . .	.75	7.50			
<b>E. G. Hill.</b> Rose-pink with lighter tints. A few golden stamens; midseason . . . . .	1.75	17.50			
<b>Enchanteresse.</b> Creamy white; guards splashed crimson; center flecked crimson; late . . . . .	2.50	25.00			
<b>Felix Crousse.</b> Deep ruby-red; center shading deeper; large fine form; midseason . . . . .	1.00	10.00			
<b>Festiva Maxima.</b> Large, ivory-white, feathery flowers; splashed crimson in center . . . . .	.75	7.50			
<b>Georgiana Shaylor.</b> Pale rose-pink; center slightly splashed crimson; midseason . . . . .	1.50	15.00			
<b>Gismonda.</b> Flesh-pink with delicate rose center; fragrant large flowers; late . . . . .	1.25	12.50			
<b>Grover Cleveland.</b> Dark crimson, very large full flower. Fine upright bloom. Late . . . . .	1.50	15.00			
<b>James Kelway.</b> Rose-white changing to milk-white; tinged yellow at base; midseason . . . . .	1.50	15.00			
<b>Jubilee.</b> Uniform blush-white. A very large, flat flower; midseason . . . . .	1.75	17.50			
<b>Karl Rosenfield.</b> Very large, dark crimson; brilliant flowers; midseason . . . . .	1.25	12.50			
<b>Kelway's Glorious.</b> White; guard petals tinted pink and slightly streaked carmine in the back . . . . .	3.00	30.00			
<b>Lady Alexandra Duff.</b> White with delicate shades of pale pink; fragrant; midseason . . . . .	\$2.25	\$22.50			
<b>La France.</b> Color La France pink, turning to soft apple-blossom-pink; midseason . . . . .	2.50	25.00			
<b>Le Cygne.</b> The color is creamy white with greenish tinge in the heart; an immense flower . . . . .	3.50	35.00			
<b>Mary Brand.</b> A vivid crimson with a silvery sheen; a medium tall grower; fine for cutting . . . . .	2.00	20.00			
<b>Marguerite Gerard.</b> Pale hydrangea-pink shading white; center flecked crimson; late . . . . .	1.25	12.50			
<b>Mme. Gaudichau.</b> Very dark crimson-garnet; large, globular flowers; midseason . . . . .	2.50	25.00			
<b>Mme. Jules Dessert.</b> White overlaid with clear pink, shaded rose and straw yellow, with a few carmine stripes . . . . .	2.00	20.00			
<b>Mignon.</b> Soft light rose passing to amber; center flecked crimson; midseason . . . . .	1.50	15.00			
<b>Mons. Jules Elie.</b> Pale lilac-rose, collar lighter shaded amber-yellow at base; midseason . . . . .	\$1.50	\$15.00			
<b>Mons. Martin Cahuzac.</b> Very dark purple-garnet with black reflex; midseason . . . . .	2.50	25.00			
<b>Octavie Demay.</b> Pale hydrangea-pink; collar almost white; fragrant and early . . . . .	1.25	12.50			
<b>Primevere.</b> Creamy white splashed scarlet; center sulphur-yellow; midseason . . . . .	1.75	17.50			
<b>Richard Carvel.</b> Very bright crimson; large, compact globular flower; early . . . . .	2.00	20.00			
<b>Sarah Bernhardt.</b> Very large, perfectly formed flowers; apple blossom color; late . . . . .	2.00	20.00			
			<b>Solange.</b> Lilac-white, deepening toward center with salmon shadings and tinged with Havana brown; late . . . . .	\$1.50	\$15.00
			<b>Walter Faxon.</b> Pure bright rose; deepening towards the center; midseason . . . . .	2.25	22.50

## Matchless Collection of NAMED PEONIES

All named varieties in a diversity of colors all distinctly named. Strong roots with 3 to 5 eyes.

Collection of 6 named varieties. \$4.00

Collection of 12 named varieties. 7.00



Sarah Bernhardt

## SINGLE or JAPANESE Types

	Each	Doz.
<b>Catherine Parry.</b> Delicate shell-pink shading to flesh-white; tall; early . . . . .	\$1.50	\$15.00
<b>Foaming Wave.</b> Carmine-rose; very choice . . . . .	2.00	20.00
<b>Flashlight.</b> Guards light Tyrian rose; center petals amber-yellow . . . . .	2.00	20.00
<b>Fuji Mine.</b> Early; white, central filament petals tipped yellow . . . . .	1.75	17.50
<b>Mikado.</b> Dark crimson with narrow filamental petals; tipped gold . . . . .	2.50	25.00

Note: If Peonies are wanted by mail, add 5c each for zones 1, 2, 3; 10c each for zones 4, 5, 6; 15c each for zones 7 and 8.



## NERINE

**Bowdeni.** A grand species from Cape Colony, with large umbels of pink flowers with a rose colored line down each petal. We offer properly ripened, extra large flowering bulbs, July delivery. Each, \$1.50; doz., \$15.00.

**Fothergilli major.** The finest of all the Nerines, producing large red flowers with a golden glitter as if sprinkled with gold dust. Adapted for pots and greenhouses. Well ripened bulbs for delivery in July. Each, \$1.00; doz., \$10.00.

**Sarniensis** (The Guernsey Lily). A bulbous plant for greenhouse or conservatory, producing heads of red flowers before the leaves. Each, 25c; 3 for 65c; doz., \$1.75; \$12.00 per 100. Delivery in November.

## ORNITHOGALUM

**Arabicum.** Makes a large umbel of small white flowers with black base produced on a tall spike. 4 for 50c; \$1.00 per doz.; \$6.00 per 100.

**Aureum.** Rich apricot-orange color, finest of all Ornithogalums. Wonderful keeper as a cut flower. 25c each; \$2.50 per doz.; \$15.00 per 100.

**Thyrsoides.** This is the famous Chinchinchee, the wonder flower from South Africa. The flowers are pyramidal shape with the buds of straw color changing to pure white. 4 for 50c; \$1.00 per doz.; \$6.00 per 100.

## OXALIS

Suitable for pots and hanging baskets for winter flowering.

	Doz.	100
<b>Buttercup.</b> The flowers are pure, bright yellow, and produced in great abundance...	\$0.50	\$3.50
<b>Grand Duchess.</b> Lavender ...	.50	3.50
<b>Boweii.</b> Pink .....	.50	3.50

## RANUNCULUS

Adapted for growing in pots or benches. They are not hardy and should not be planted outside north of Washington.

### New Giant Paraflor

This new giant Ranunculus is far ahead of the improved types that were offered last year. The perfectly double flowers are produced on tall, stout stems and appear in every conceivable shade of color. The blooms are four times larger than the old type and resemble medium Double Dahlias.

This superb Ranunculus created a sensation at the National Convention in Cincinnati, where it received a Gold Medal.

	Doz.	100
<b>Two-year-old No. 1 bulbs</b> ...	\$1.00	\$6.00
<b>Paraflor Type.</b> In straight Pink, Yellow or Gold .....	1.25	8.00

## SNOWDROPS

One of the earliest flowers of spring. Can be planted in borders or lawns. Flowers white.

	Doz.	100	1000
<b>Single</b> .....	\$0.50	\$3.50	\$30.00
<b>Double</b> .....	1.00	6.00	55.00

## SPARAXIS

A race of Cape bulbs with extra large flowers, remarkable for exceptional brilliancy of color. They are quite hardy and do well in a sunny, well drained border.

**Finest Mixed.** 80c per doz.; \$5.00 per 100.

## SCILLA

(Squills; Harebell)

All the varieties of the Scilla campanulata and nutans family are splendid for naturalizing because they will flower in shady places. Both have bells like small Hyacinths, forming long and graceful spikes. The Scilla sibirica is used as a companion to Crocus, for borders or massing.

	Doz.	100	1000
<b>Campanulata alba maxima.</b> Large, pure white .....	\$0.60	\$4.00	\$35.00
<b>Excelsior.</b> Large, bright blue .....	.70	4.00	35.00
<b>Rosy Queen.</b> Soft lilac-rose .....	.60	4.00	35.00
<b>Nutans.</b> These are larger than Campanulata.			
<b>alba inajor.</b> White.	.50	3.50	30.00
<b>Blush Queen.</b> Delicate lilac-rose ...	.60	4.00	35.00
<b>caerulea</b> (Bluebell). Violet-blue .....	.50	3.50	35.00
<b>Sibirica, Spring Beauty.</b> A great improvement of the old sibirica. The color is a clearer blue, flowers much larger, and from five to six produced on each bulb ...	1.00	7.00	
<b>Sibirica.</b> Sky-blue. Largest size bulbs ..	.50	3.50	30.00

## SPIRAEA (Astilbe)

We will be able to supply, in October, a fine lot of well-ripened clumps of some of the best varieties of the new Spiraeas. These clumps will be suitable for 7-inch pots and will force readily for Easter or earlier.

	Each	Doz.
<b>Deutschland.</b> Pure white ...	\$0.75	\$ 7.50
<b>Elegance.</b> A pastel shade of Cattleya-pink. A gorgeous color .....	1.00	10.00
<b>Gloria Superba.</b> A splendid brilliant dark pink .....	.70	7.00
<b>Granad.</b> A handsome tall growing variety with plumes of carmine-red .....	1.00	10.00
<b>Hyacinth.</b> Plumes of a witching Cattleya shade. Very tall.	.70	7.00
<b>Market Glory.</b> A rich crushed strawberry-pink. Seven to ten handsome flower spikes. Excellent forcer .....	.75	7.50
<b>Princess Mary.</b> Deep rose-pink, shaded lilac .....	.70	7.00
<b>Queen Alexandra.</b> Compact bright pink .....	.70	7.00

## SPIRAEA — Retarded Clumps

We can supply some of the above varieties kept in cold storage so that they may be brought into bloom for Christmas. 3 for \$3.50; \$12.00 per doz.

## TRITONIA CROCATA

This interesting bulbous plant is commonly known as the Orange Ixia, which it resembles.

**Salmon King.** A beautiful soft salmon-orange.

**Prince of Orange.** A flaming orange. Mixed hybrids: 80c per doz.; \$5.00 per 100.

## TRILLIUM

(American Wood Lily)

Most beautiful American plants, perfectly hardy, growing and flowering profusely in partially shaded nooks about the lawn, under trees, etc.

**Erectum.** Broad leaves with a dark purple flower.

**Grandiflorum.** Large white flowers changing to soft rose.

**Stylosum.** Pink flowers in early spring.

Any of the above: Doz., \$1.50; 100, \$9.00; 1000, \$80.00. Roots ready for delivery in October.

## TRITOMA

**Rufa.** A very dainty yellow flower, and being an early flowering type and a continuous bloomer, it is particularly adapted for forcing.

**Rufa Hybrids.** A charming range of colors of the above. Beautiful for pots or greenhouse forcing.

**Strong Roots for Forcing.** 3 for \$1.50; \$5.00 per doz.; \$35.00 per 100.

## WATSONIA

Lovely for pots and pans in the cool greenhouse; graceful branches grow 2 to 3 feet high, covered with elegant blossoms.

**Augusta.** Orange-scarlet.

**Mrs. O'Brieni.** White.

**Victory.** Coral-pink, scarlet shadings.

All above: 3 for 40c; \$1.40 per doz.; \$8.00 per 100.

Delivery—October-November.

## Accessories for Indoor Bulb Growing

**Marshall's Prepared Fiber.** Box 15c; 1/2 pk., 35c; pk., 60c; bu., \$2.00. Postage extra.

**White Pebbles.** For Paper-White Narcissus and Roman Hyacinths. Qt., 20c; 4 qts., 70c; pk., \$1.25. Postage extra.

**Pearl Chips.** Used for bowls of bulbs.

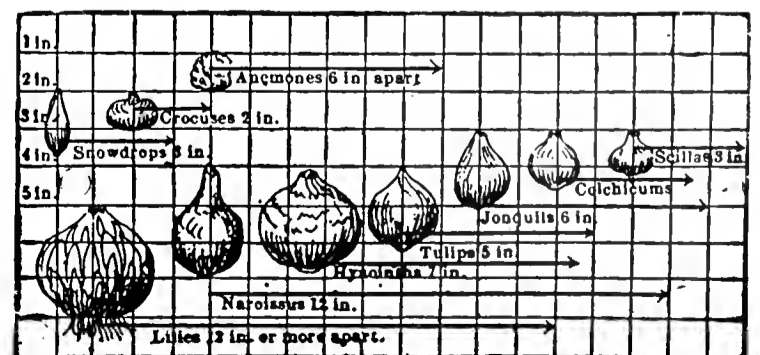
**Colored Chips, lb., 20c. White Chips, lb., 10c.** Postage extra at zone rates.

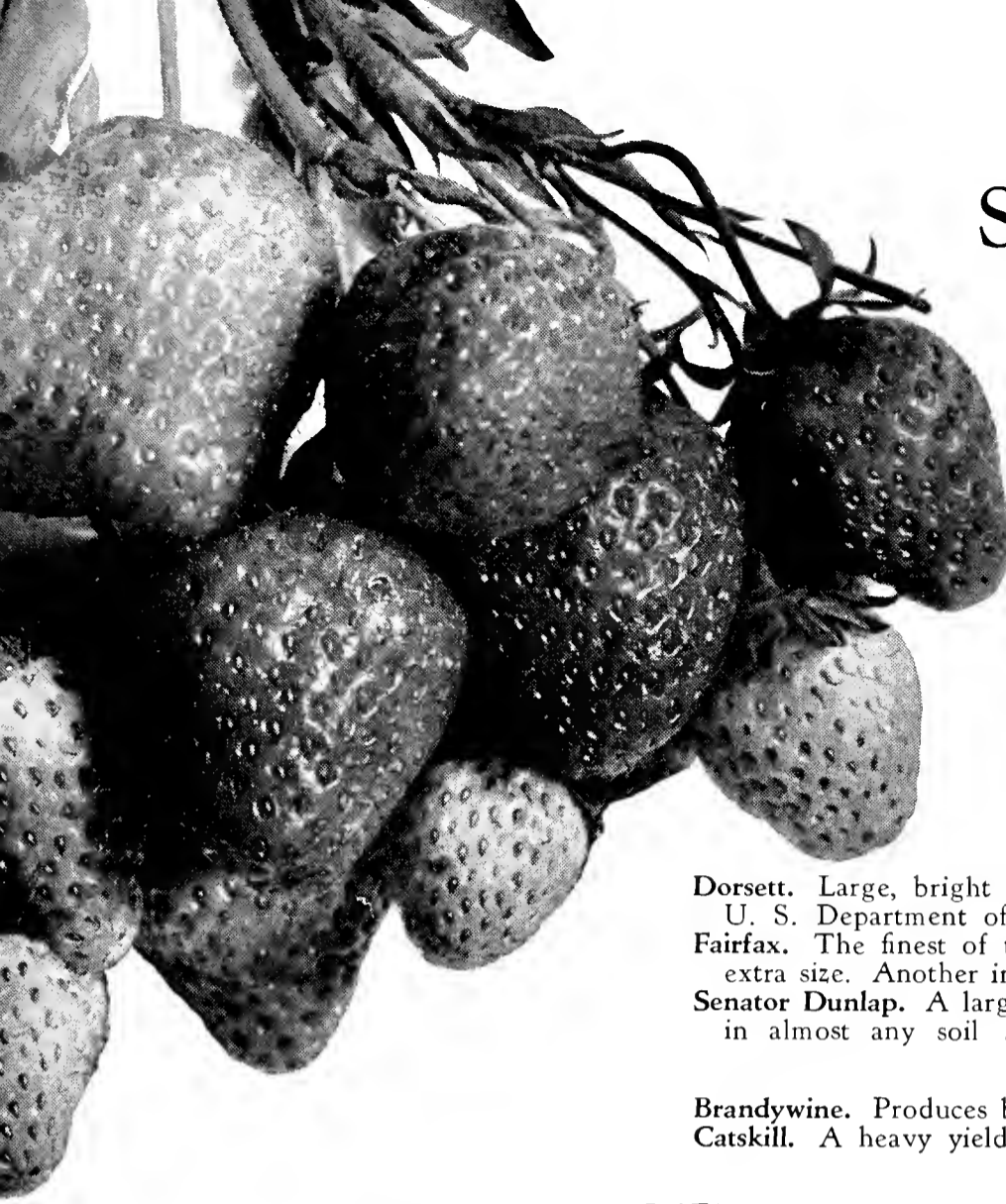
## Planting Table for Beds of Bulbs

A circular bed 6 feet in diameter, with bulbs 6 inches apart, requires 110 bulbs; 5 inches apart, requires 160 bulbs; 4 inches apart, 300 bulbs.

### DEPTH AT WHICH BULBS SHOULD BE PLANTED

Many of our customers are frequently puzzled to know the proper depth and distance apart at which bulbs should be planted. The accompanying diagram conveys the information much more clearly and briefly than we could describe it. The chart will bear careful study. **Outdoor planting should be done early in the fall** to secure healthy plants, vigorous foliage and beautiful flowers.





# Marshall's Pot-Grown STRAWBERRY PLANTS

For Summer and Fall Delivery

The best time to plant pot-grown Strawberries is during the month of July and early part of September. They have the great advantage over "layer" plants of producing a crop of the largest and finest berries the first season after planting. Further than this, they may be safely planted in the hottest and driest weather without serious check to growth, and may be planted where early potatoes, peas, or other early crops have been harvested.

## EXTRA EARLY VARIETIES 25 100

- Early Jersey Giant.** The earliest variety, producing large fruit, with a rich, wild Strawberry flavor ... \$2.25 \$8.00
- Premier.** Produces vast quantities of sizable attractive berries of excellent quality ..... 2.00 7.00
- Success.** An excellent variety with large, uniform berries of bright scarlet color ..... 2.00 7.00

## MEDIUM EARLY VARIETIES

- Bun Special.** A very productive variety, with large, luscious fruit ..... 2.00 7.00
- Dorsett.** Large, bright red, firm berries of excellent quality. Introduced by the U. S. Department of Agriculture ..... 2.00 7.00
- Fairfax.** The finest of the medium early class. Fine large bright red berries of extra size. Another introduction of the U. S. Department of Agriculture ..... 2.00 7.00
- Senator Dunlap.** A large cropper with firm berries of excellent flavor. Does well in almost any soil ..... 2.00 7.00

## MIDSEASON VARIETIES

- Brandywine.** Produces bright crimson berries of excellent flavor ..... 2.00 7.00
- Catskill.** A heavy yielder of excellent fruit, being very productive and of high quality ..... 2.25 8.00

- Glen Mary.** Wonderful high quality and great productivity are the qualities of this berry ..... 2.00 7.00

- Joe.** Large, firm berries in abundance. Equally attractive to the eye and palate ..... 2.00 7.00

- Marshall.** Though an old berry it has lost none of its popularity. One of the best for forcing ..... 2.00 7.00

- McKinley.** The berries are large, handsome and freely produced on strong plants ..... 2.00 7.00

## LATE VARIETIES

- Big Late.** Ranks with best in vigor of plant growth, productivity and quality. Large, bright, glossy red berry. 2.00 7.00

- Chesapeake.** This variety requires high culture upon clay loam. The berries are firm and bright crimson in color. 2.25 8.00

- Gandy.** An old and popular variety. The texture is of the firmest and the color a bright flame ..... 2.00 7.00

- New Washington.** An excellent variety of high quality. We recommend giving this a trial ..... 2.25 8.00

- William Belt.** Fruits from early to late on any soil. Very large crimson berries ..... 2.00 7.00

## EVERBEARING VARIETIES

- Green Mountain.** (U. S. Plant Patent No. 112). This wonderful new Everbearing Strawberry is apparently the healthiest and the hardiest of all varieties. The vigorous plants appear to be immune from disease. Its high quality berries are produced in even greater abundance in June than most of the summer-fruiting sorts. It also produces a very heavy fall crop which continues up until severe cold weather prevails ..... \$5.00 \$17.50

- Mastodon.** "The Wonder Berry." One of the largest, most delicious and heaviest yielding of the everbearing sorts ..... 2.75 10.00

- Progressive.** A popular variety with two large crops. One in June and a second which lasts throughout the fall.. 2.50 9.00

All Pot-Grown Strawberry Plants are Shipped by Express, Charges Collect.

# Marshall's TRAINED FRUIT TREES

Specially Budded on "Dwarfing" Under Stocks

We issue a special folder on Trained Fruit Trees. Sent upon request.

In our constant effort to offer "everything good for every good garden," we have made arrangements with a specialist to grow trained fruit trees for us.

We issue a special folder on the training, pruning and care of these trained fruit trees. A copy will be mailed to anyone requesting same. Our list illustrates some of the types grown and also gives particulars of the varieties in which they may be obtained.

## APPLES

BUDDED ON PARADISE

- Baldwin Fameuse  
Delicious McIntosh  
Duchess of Oldenburg Rhode Island Greening

## APRICOTS

BUDDED ON PLUM

- Early Golden  
Moorpark

## NECTARINES

BUDDED ON PLUM

- Humboldt Newton Victoria  
Lord Napier Spencer

## PEACHES

BUDDED ON MAHALEB PLUM

- Champion Rochester  
Crawford's Early Hale's Early  
Elberta Yellow St. John

## PEARS

BUDDED ON QUINCE

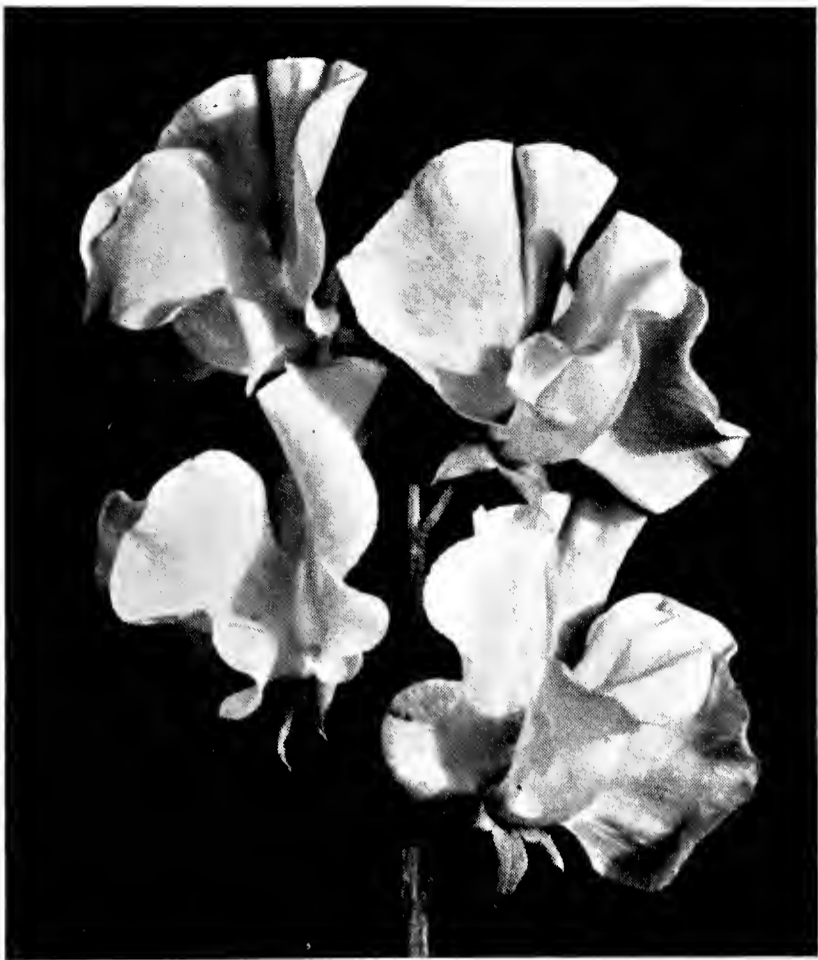
- Anjou Duchesse d'Angouleme  
Bartlett Flemish Beauty  
Clapp's Favorite Seckel

## PRICES

	Each
Single Cordon, Vertical	\$ 2.75
Horizontal Cordon	5.00
Horizontal Cordon, Single for corners	4.00
U-Shaped, 4 to 5 feet	5.00
U-Shaped, 6 to 8 feet	7.00
Double U or Palmette Verrier, 4 to 5 feet	8.00
Double U or Palmette Verrier, 6 to 8 feet	10.00
Six-Armed Verrier	\$15.00 to 18.00
Eight-Armed Verrier	\$20.00 to 24.00
Fan-Shaped Trees, in several varieties	\$10.00 to 20.00

No charge for packing when cash accompanies order. All shipments sent by express, charges collect.





## Marshall's Early Flowering Spencer Sweet Peas

The Early Flowering Spencers bloom about two weeks earlier than the late flowering varieties when grown under congenial conditions. The flowers are beautifully waved and produced on long stems, four flowers predominating on each stem. For winter flowering under glass or in the southern states they far surpass the Late Spencers. When grown in the open ground they will usually bloom in about 100 days after planting.

- |  |  |
|--|--|
| *Amethyst. Royal purple.                 | *Majestic Rose. Brilliant rose-pink.   |
| *Annie Laurie. Pure rose-pink.           | *Mrs. Herbert Hoover. Clear blue.      |
| *Ball Rose. Rose-pink.                   | Mrs. Kerr. Salmon.                     |
| *Blue Bonnet. Clear deep blue.           | *Red Bird. Bright crimson-red.         |
| *Exposition Pink. Rich pink.             | Silver Blue. Delicate lavender-blue    |
| Giant Rose. Rose-pink.                   | Snowstorm Improved. Pure white.        |
| Glitters. Cerise.                        | Sweet Lavender. Pure lavender self.    |
| Grenadier. Dazzling scarlet.             | *Valencia. Sun-proof orange.           |
| Harmony. Clear lavender.                 | White Harmony. White, black seeded.    |
| *Hope. Pure white, black seeded.         | Yarrowa. Bright rose-pink.             |
| *Jeanne Mamitsch. Rose-pink, long stems. | Zvolanek's Blue Sensation. Clear blue. |
| *Lady Gay. Soft shrimp-pink.             | Zvolanek's Orange. Orange.             |
| *Lavanda. Finest clear lavender.         | Early Flowering Mixed. Oz., 75c.       |

Each of the above varieties except where priced: Pkt., 15c; oz., \$1.00.

Varieties marked with an asterisk (\*) we submit as being the twelve best varieties in their respective class.

For General List of Sweet Peas See Our Spring Catalog

## Marshall's LAWN GRASS SEEDS

Marshall's Lawn Grass Seeds have given universal satisfaction for the past 30 years and are used on many of the largest estates in every section of the country for making the best lawns. Our mixtures contain only the best grades of re-cleaned grasses, blended in proportions to give quick and permanent results.

### Marshall's "DUROGREEN" LAWN GRASS

Marshall's "Durogreen" Lawn Grass Mixture (formerly called Special Lawn Grass) produces a perfect as well as permanent lawn of luxuriant richness. It quickly forms a closely interwoven, firm and elastic turf ready for cutting in about 6 weeks from time of sowing. This "Special" mixture is the result of years of experimenting and is composed of the proper proportions of fine-leaved, deep rooting, perennial grasses which will thrive under varied conditions of soil and climate; maintaining a succession of growth during the different seasons of the year, thus insuring a rich, deep green, smooth and velvety lawn, free from clumps.

This is a scientifically blended mixture, containing only the highest grade of re-cleaned seeds of Red Top, Kentucky Blue, Chewing's Fescue, and Perennial Rye grasses, blended in proper quantities.

Price: Lb., 60c; 5 lbs., \$2.75; 20 lbs., \$10.00; 100 lbs., \$50.00.

Delivered transportation paid when cash accompanies the order.

### Marshall's "MATCHLESS" Lawn Grass

Marshall's "Matchless" Lawn Grass Mixture (formerly called Central Park) still maintains a high place in the esteem of those who

desire an even, dense growth of permanent sward very early in the season. This mixture contains no annual grasses so detrimental to a permanently good lawn. Only grasses of lasting value and extreme hardiness are used in this popular mixture and we exercise great care to use only the purest seed in the proper proportions in its blending. This mixture is recommended to those who desire a popular priced mixture for average conditions and requirements.

Our Matchless Lawn Mixture is prepared from our own formula and must not be confused with many mixtures that are sold under this name. It is composed of only the best re-cleaned seeds, containing Kentucky Blue, Fancy Red Top, Fescue, Perennial Rye and a small quantity of White Clover, all blended to warrant perfect results.

1 lb. will sow a plot 15x15 ft.; 3 1/2 lbs., 25x40 ft. (1000 sq. ft.); 150 lbs., 1 acre (43,565 sq. ft.).

Price: Lb., 45c; 5 lbs., \$2.15; 20 lbs., \$8.00; 100 lbs., \$40.00.

Delivered transportation prepaid when cash accompanies the order.

### Marshall's "SHADY PLACE" Lawn Grass

Usually it is quite difficult to obtain a satisfactory growth of grass under trees and in shady places; for sowing in such places we recommend the use of this special mixture. It will quickly produce an abundant and even growth of beautiful green grass. The grasses used in making this special mixture are only those adapted for growing in shade. It has been successfully used on some large operations where a green sward was desired on land partially shaded by old trees.

Price: Lb., 60c; 5 lbs., \$2.80; bu. (20 lbs.), \$11.00; 100 lbs., \$55.00.

Delivered prepaid when cash accompanies order.

Prices of other mixtures, also separate varieties of Grasses and Clovers on application.





# Marshall's HARDY PERENNIAL

Seeds of perennials should be sown in June, July or August in cold frames or prepared beds and seedlings transplanted when large enough to handle. Protect with sash or light covering in the winter.

For description of varieties, see our spring catalog.



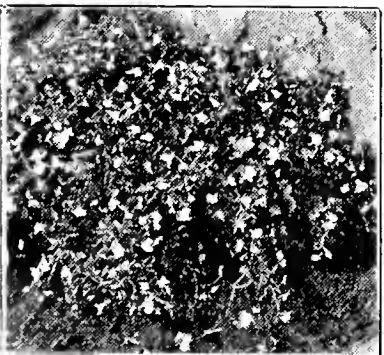
Achillea



Aquilegia



Gaillardia



Linaria

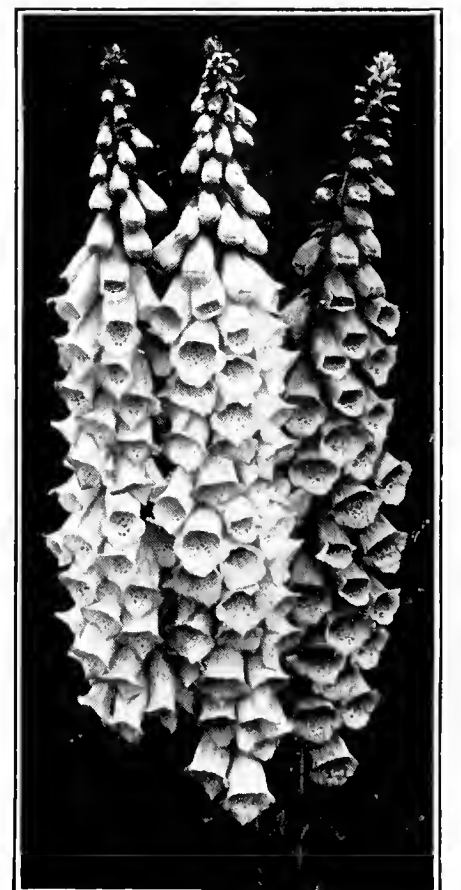
ACHILLEA ptarmica, "The Pearl" .....	Pkt.	\$0.25	CANTERBURY BELLS medium, Blue, Rose, Lav- ender or White .. each ..	Pkt.	\$0.10
ACONITUM napellus .....	.15		medium, Mixed .....	.10	
Wilsoni .....	.25		medium, Double Blue, Rose or White .....	each .15	
ADONIS vernalis .....	.15		medium, Double Mixed ....	.15	
AGROSTEMMA coronaria (Rose Champion) .....	.10		medium calycanthema (Cup- and-Saucer). Blue, Laven- der, Rose or White...each	.15	
ALYSSUM saxatile compactum saxatile, Silver Queen .....	.15		Finest Mixed .....	.15	
ANCHUSA grandiflora (Drop- more Variety) .....	.15		CENTAUREA montana .....	.15	
ANEMONE coronaria, St. Brigid .....	.15		CERASTIUM tomentosum ...	.25	
coronaria, Double Chrysan- themum Mixed .....	.15		CHEIRANTHUS allioni ....	.25	
japonica, Pink .....	.25		linifolius .....	.25	
japonica alba, White .....	.25		CHELONE barbata (Pentste- mon) .....	.15	
ANTHEMIS Kelwayi .....	.15		CHRYSANTHEMUM King Edward VII .....	.25	
AQUILEGIA or COLUMBINE Marshall's Matchless Long- Spurred Hybrids .....	.25		maximum grandiflorum ....	.15	
caerulea .....	.15		Double Shasta, Giant White.	.50	
chrysantha .....	.15		COREOPSIS grandiflora ....	.10	
chrysantha grandiflora alba..	.25		grandiflora fl. pl. ....	.15	
Copper Queen .....	.25		COWSLIP, Mixed (Primula veris) .....	.25	
glandulosa vera .....	.50		DELPHINIUM (Larkspur) belladonna, Improved .....	.25	
Rose Queen .....	.25		belladonna, Fanny Stor- month .....	.50	
Skinneri .....	.15		bellamosa, Improved .....	.25	
Single, Mixed Colors .....	.15		chinensis album .....	.10	
Double Flowering, Mixed Colors .....	.15		chinensis azureum .....	.10	
ARABIS alpina .....	.15		chinensis, Mixed (grandi- florum) .....	.10	
ARMERIA, Giant Thrift .....	.15		Iceberg .....	.50	
ASPERULA odorata (Wood- ruff) .....	.15		Marshall's Matchless Hybrids.	.25	
ASTER, Michaelmas Daisy, Mixed .....	.25		Blackmore & Langdon's English Hybrids .....	.50	
Farreri .....	.50		Wrexham or Hollyhock Hybrids .....	2.00	
AUBRIETIA graeca .....	.15		DIANTHUS, PERENNIAL PINKS		
Leichtlini .....	.15		caesius .....	.25	
hybrida grandiflora .....	.25		deltoides .....	.25	
AURICULA, Finest Mixed ...	.25		plumarius fl. pl. (Pheasant's Eye) .....	.15	
BELLIS perennis fl. pl. Longfellow .....	.25		plumarius semperflorens ....	.25	
Snowball .....	.25		DICTAMNUS fraxinella ....	.15	
Giant Red .....	.25		DIGITALIS or FOXGLOVE Marshall's Superb Purple ...	.10	
Giant Mixed .....	.25		Marshall's Superb Rose ....	.10	
BOCCONIA japonica .....	.15		Marshall's Superb Yellow ...	.15	
BOLTONIA asteroides .....	.15		Marshall's Superb White ...	.10	
latisquama .....	.15		Marshall's Superb Mixed ...	.10	
CALLIRHOE involucreta (Poppy Mallow) .....	.15		Giant Shirley Hybrids .....	.25	
CAMPANULA carpatica .....	.15		DORONICUM caucasicum ..	.50	
carpatica alba .....	.15		ECHINOPS ritro (Blue Globe Thistle) .....	.10	
pyramidalis (Chimney Bell). pyramidalis alba .....	.15		EDELWEISS (Leontopodium). EREMURUS, Gold Medal	.25	
persicifolia grandiflora, Blue. persicifolia grandiflora alba ..	.25		Hybrids .....	.50	
persicifolia, Telham Beauty.. persicifolia grandiflora, Fine	.35		ERIGERON speciosus (The Midsummer Daisy) .....	.15	
Mixed .....	.25				
rotundifolia .....	.25				
CANDYTUFT gibraltarica (Iberis) .....	.15				
sempervirens .....	.25				



Tritoma



Chrysanthemum, Double Shasta



Digitalis

## RANUNCULUS Marshall's Super Hybrids

We procure this seed from a New Zealand grower who has been supplying seed from which most of the prize-winning flowers at the big shows have been produced. Absolutely the best strain procurable.

Pkt., \$1.00; 6 pkts. for \$5.00.



# FLOWER SEEDS (For Autumn Sowing)

ERINUS alpinus .....	Pkt. \$0.50	LYCHNIS Arkwrighti .....	Pkt. \$0.25	PRIMROSE, Marshall's New	Pkt.
ERYNGIUM amethystinum		chalcedonica .....	.10	Blue .....	\$0.50
(Sea-holly) .....	.15	Haageana Hybrids, Mixed		vulgaris (English Yellow	
ERYSIMUM pulchellum ...	.15	Colors .....	.15	Primrose) .....	.15
EUPATORIUM Fraseri ....	.15	viscaria splendens .....	.10	vulgaris Hybrids .....	.25
purpureum .....	.25	MYOSOTIS or FORGET-		PRIMULA Beesiana .....	.25
GAILLARDIA, Marshall's		ME-NOTS.		cashmeriana .....	.50
Matchless Hybrid .....	.25	alpestris, Blue .....	.15	japonica (Japanese Prim-	
Portola Hybrids .....	.25	alpestris, Pink .....	.15	rose) .....	.25
GALEGA officinalis .....	.10	alpestris, Mixed Colors ...	.10	PYRETHRUM hybridum.	
officinalis alba .....	.10	Blue Bird .....	.50	Single. Large flowering	
GAURA Lindheimeri .....	.10	dissitiflora .....	.15	mixed .....	.15
GENTIANA acaulis .....	.25	palustris semperflorens ...	.15	hybridum fl. pl., Double ..	.25
GEUM atrosanguineum fl. pl.	.10	Marshall's Royal Blue ....	.15	REHMANNIA angulata ....	.25
Mrs. Bradshaw .....	.15	Ruth Fischer .....	.25	ROCKET, SWEET, Purple..	.10
Lady Stratheden .....	.15	Victoria .....	.15	White .....	.10
Orange Queen .....	.25	NIEREMBERGIA frutescens.	.10	Finest Mixed Colors .....	.10
GRASSES, ORNAMENTAL		NEPETA Mussini .....	.25	ROMNEYA Coulteri .....	.25
Erianthus ravennae .....	.10	OENOTHERA missouriensis.	.25	RUDBECKIA Newmanni ...	.15
Eulalia zebrina .....	.10	PANSIES		purpurea hybrida grandiflora.	.15
Gynerium argenteum ....	.10	Marshall's Special Mixture.	1.00	SALVIA azurea grandiflora..	.25
Pennisetum ruppelianum ..	.10	Marshall's Superb Giant		SCABIOSA caucasica alba ..	.25
GYP SOPHILA paniculata ..	.10	Mixed .....	.25	caucasica .....	.25
paniculata flore pleno ...	.25	Marshall's Matchless		caucasica Hybrids .....	.35
pacifica .....	.35	Mixture .....	.50	japonica .....	.15
HELENIUM, Riverton Gem.	.15	Masterpiece .....	.25	Columbaria, Lavender ....	.25
autumnale superbum .....	.15	Giant Trimardeau, Mixed..	.10	Columbaria, Pink .....	.25
HELIANTHUS perennis		GIANT PANSIES		SEDUM acre (Stonecrop) ..	.25
Hybrids .....	.25	In Varieties.		anglicum .....	.25
questifolius, Autumn Glory.	.15	Apricot Bedder .....	.15	coeruleum .....	.25
HEUCHERA sanguinea		Giant Adonis .....	.15	Ewersi .....	.50
splendens .....	.15	Giant Cardinal .....	.15	Middendorffi .....	.50
sanguinea hybrida .....	.25	Giant Emperor .....	.15	SIDALCEA, Stark's Hybrids.	.50
HIBISCUS moscheutos ....	.10	Giant Fire King .....	.15	Rosy Gem .....	.25
Marshall's Rainbow grandi-		Giant Golden Queen .....	.15	SILENE orientalis .....	.10
florus Hybrids .....	.15	Giant Golden Yellow, with		Schafta .....	.15
HOLLYHOCKS		dark eye .....	.15	STATICE latifolia .....	.10
Marshall's Giant, Double		Giant King of the Blacks ..	.15	incana hybrida, Mixed ...	.10
Apple Blossom .....	.15	Giant Lord Beaconsfield ..	.15	STOKESIA cyanea .....	.15
Marshall's Giant, Newport		Giant Orange King .....	.15	Finest Mixed .....	.15
Pink .....	.15	Giant Prince Bismarck ....	.15	SWEET WILLIAM	
Marshall's Giant, Pink		Giant Snow Queen .....	.15	(Dianthus barbatus).	
Queen .....	.15	Giant Striped .....	.15	Double Flowering, Mixed..	.10
Marshall's Giant, Double		Giant Victoria .....	.15	Single Flowering Varieties:	
Scarlet .....	.15	Giant White .....	.15	Crimson King .....	.10
Marshall's Giant, Double		Collection of 6 Varieties,		Diadem .....	.10
Rose .....	.15	Giant Named .....	.75	Giant White .....	.10
Marshall's Giant, Double		Collection of 12 Varieties,		Holborn Glory .....	.10
Sulphur Yellow .....	.15	Giant Named .....	1.50	Newport Pink .....	.10
Marshall's Giant, Double		PENTSTEMON		Nigrescens .....	.10
White .....	.15	gloxinioides, "Sensation" ..	.15	Scarlet Beauty .....	.10
Chater's Extra Choice,		Marshall's Matchless Hy-		Pink Beauty .....	.10
Double Mixed .....	.15	brids .....	.25	Single Flowering Finest	
Marshall's Giant, Single		PHLOX decussata .....	.25	Mixed Colors .....	.10
Mixed .....	.10	PHYSALIS Francheti .....	.15	THALICTRUM	
INCARVILLEA Delavayi ..	.25	PHYSOSTEGIA virginica ..	.15	adiantifolium .....	.15
KUDZU VINE (Pueraria		virginica alba .....	.15	diptero carpum .....	.25
Thunbergiana) .....	.10	PLATYCODON grandiflorum.	.15	TRITOMA, Stark's Early	
LATHYRUS latifolius (Per-		album .....	.15	Hybrids .....	.25
ennial Sweet Pea) .....	.15	Mariesi .....	.15	TROLLIUS, Orange Globe	
White Pearl .....	.15	POLEMONIUM coeruleum		Hybrids .....	.25
Pink Beauty .....	.15	grandiflorum .....	.10	VALERIAN, Red .....	.10
Finest Mixed .....	.10	grandiflorum album .....	.10	VERBASCUM phoeniceum..	.15
LIATRIS pycnostachya ....	.25	POLYANTHUS, Matchless		Miss Willmott .....	.25
LINARIA cymbalaria (Kenil-		Gold Laced .....	.50	VERBENA venosa .....	.15
worth Ivy) .....	.15	Munstead Giants .....	.50	VERONICA spicata .....	.15
LINUM perenne .....	.10	POPPY bracteatum .....	.10	VIOLA (Tufted Pansies).	
flavum .....	.25	POPPIES (Iceland Poppies)		Admiration .....	.15
LOBELIA cardinalis		nudicaule .....	.15	Apricot .....	.25
(Cardinal Flower) .....	.25	nudicaule aurantiacum ....	.15	Arkwright Ruby .....	.25
LUPINUS		nudicaule album .....	.15	Haslemere .....	.25
Matchless. Mixed shades ..	.25	nudicaule Coonara Pinks..	.25	Jersey Gem .....	.35
polyphyllus albus .....	.10	nudicaule Mixed .....	.15	lutea grandiflora .....	.15
polyphyllus caeruleus ....	.10	orientale, Mixed Hybrids ..	.10	Mauve Queen .....	.15
polyphyllus roseus .....	.15	POTENTILLA, Double Hy-		White Perfection .....	.15
polyphyllus, Golden Spire.	.25	brids Mixed .....	.25	Finest Mixed .....	.15
Snow Queen .....	.15	Single Mixed .....	.15	VIOLET (Sweet Scented) ..	.25
Mixed Perennial Varieties..	.10			WALLFLOWER, Single Fine	
				Mixed .....	.10
				Double Fine Mixed .....	.25



Alyssum Saxatile



Armeria



Gypsophila Paniculata fl. pl.



Oriental Poppies

# Marshall's Matchless LILIES



## Lilium Candidum

*(The Madonna Lily)*

This, one of the best known Lilies, thrives in almost any kind of soil and location. Bulbs should be planted in September. See page 16.

W. E. MARSHALL & CO., Inc.  
150 W. 23rd St. New York City